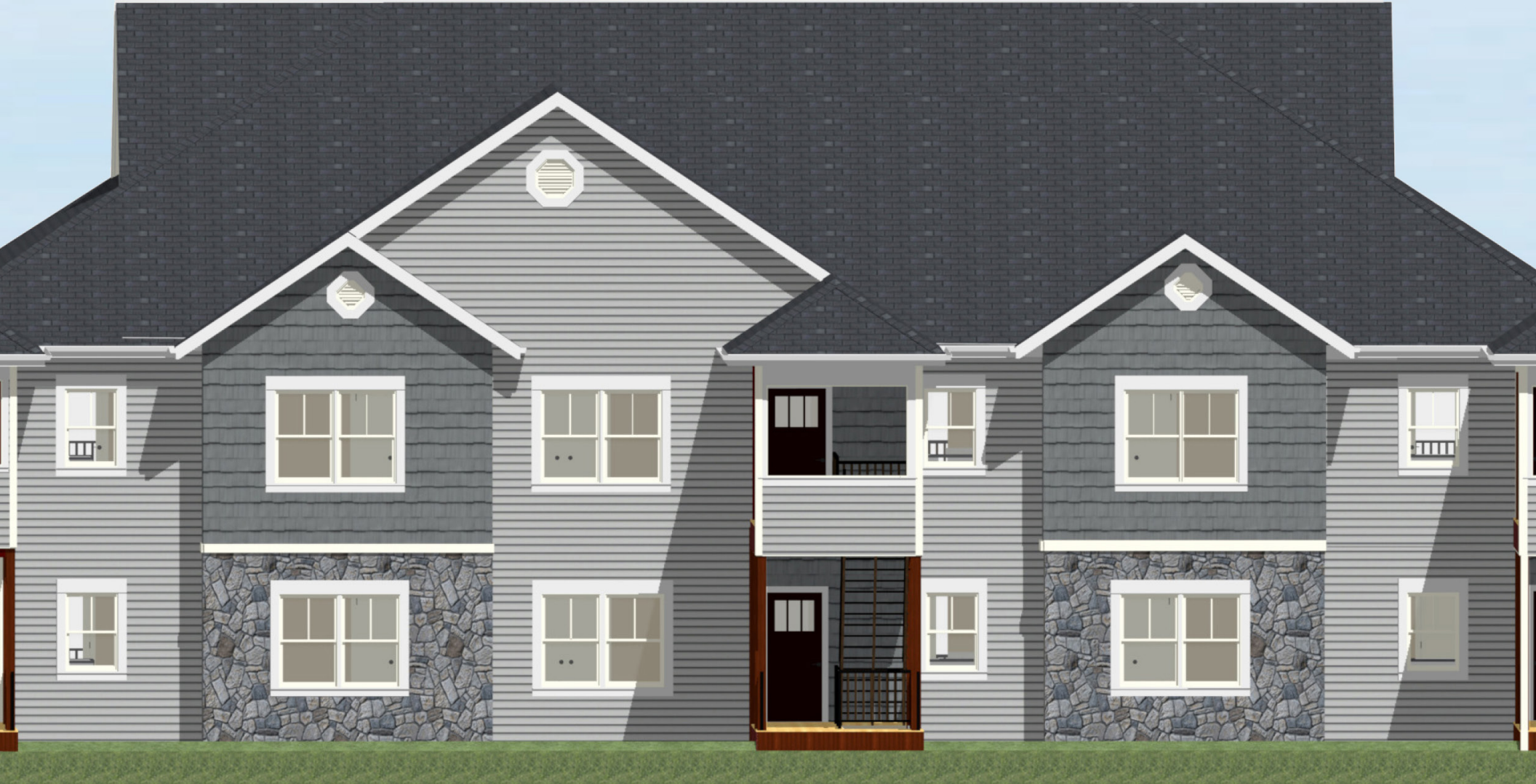




# OCTOBER 2020 Harrisonburg & Rockingham County Real Estate Market Report

*An analysis of real estate activity through September 30, 2020  
provided courtesy of Scott P. Rogers, Funkhouser Real Estate Group*



New, Two Bedroom Condominiums For Sale Minutes From Downtown Harrisonburg . . . . . FoundersWay.com

# HOME SALES REPORT

Harrisonburg & Rockingham County

October 2020

All Residential Sales	2017	2018	2019	2020	% Change ('19 - '20)
September	105	100	113	150	32.74%
Year-To-Date (Jan - Sep)	961	1,001	1,019	1,049	2.94%
Last 12 Months (Oct - Sep)	1,266	1,302	1,324	1,353	2.19%

Median Sales Price	2017	2018	2019	2020	% Change ('19 - '20)
September	\$190,000	\$200,250	\$230,000	\$248,750	8.15%
Year-To-Date (Jan - Sep)	\$196,000	\$212,700	\$219,900	\$240,900	9.55%
Last 12 Months (Oct - Sep)	\$195,000	\$212,000	\$212,250	\$238,400	12.32%

Median Days on Market	2017	2018	2019	2020	% Change ('19 - '20)
Year-To-Date (Jan - Sep)	32	21	17	10	-41.18%
Last 12 Months (Oct - Sep)	39	25	21	12	-42.86%

Home sales skyrocketed in September 2020 - with 150 closed sales - a full 32.74% higher than last September! This strong month of home sales caused the 2020 YTD sales figure (1,049 sales) to finally climb higher than last year (1,019 sales) by the end of September. Sales prices are also up quite a bit (+9.55%) thus far in 2020. Again -

the median sales price during the first nine months of 2020 was \$240,900 - which is 9.55% higher than last year during the same timeframe when it was \$219,900. The median "days on market" for homes sold in the first nine months of this year was 10 days - which is 41% (or 7 days) faster than last year.

# HOME SALES REPORT

Harrisonburg & Rockingham County

October 2020

Detached Homes	2017	2018	2019	2020	% Change ('19 - '20)
Year-To-Date (Jan - Sep)	673	726	737	735	-0.27%
Last 12 Months (Oct - Sep)	909	944	955	951	-0.42%

Median Sales Price	2017	2018	2019	2020	% Change ('19 - '20)
Year-To-Date (Jan - Sep)	\$222,500	\$229,700	\$239,900	\$262,000	9.21%
Last 12 Months (Oct - Sep)	\$219,900	\$229,250	\$233,500	\$257,500	10.28%

Attached Homes	2017	2018	2019	2020	% Change ('19 - '20)
Year-To-Date (Jan - Sep)	288	275	282	314	11.35%
Last 12 Months (Oct - Sep)	357	358	369	402	8.94%

Median Sales Price	2017	2018	2019	2020	% Change ('19 - '20)
Year-To-Date (Jan - Sep)	\$159,000	\$165,000	\$175,000	\$191,000	9.14%
Last 12 Months (Oct - Sep)	\$157,900	\$165,000	\$174,900	\$189,900	8.58%

The green charts above shows trends in detached home sales -- as compared to the orange charts which show attached home sales, comprised of duplexes, townhouses and condominiums. Over the past year the pace of detached home sales has fallen just slightly (-0.42%) to 951 sales per year while the pace of attached home sales

has risen 8.94% to 402 sales per year. The median sales price of detached homes has risen an astonishing 10.28% over the past year to \$257,500 and the median sales price of attached homes has also risen quite a bit (8.58%) -- to \$189,900 in Harrisonburg and Rockingham County.

# HOME SALES REPORT :: BY AREA

# Home Sales	City of Harrisonburg			Rockingham County		
	2019	2020	% Change	2019	2020	% Change
September	30	38	26.67%	83	112	34.94%
Last 12 Months (Oct - Sep)	420	387	-7.86%	904	966	6.86%

Median Sales Price	City of Harrisonburg			Rockingham County		
	2019	2020	% Change	2019	2020	% Change
September	\$192,600	\$236,500	22.79%	\$250,000	\$264,500	5.80%
Last 12 Months (Oct - Sep)	\$190,000	\$220,000	15.79%	\$228,000	\$244,950	7.43%

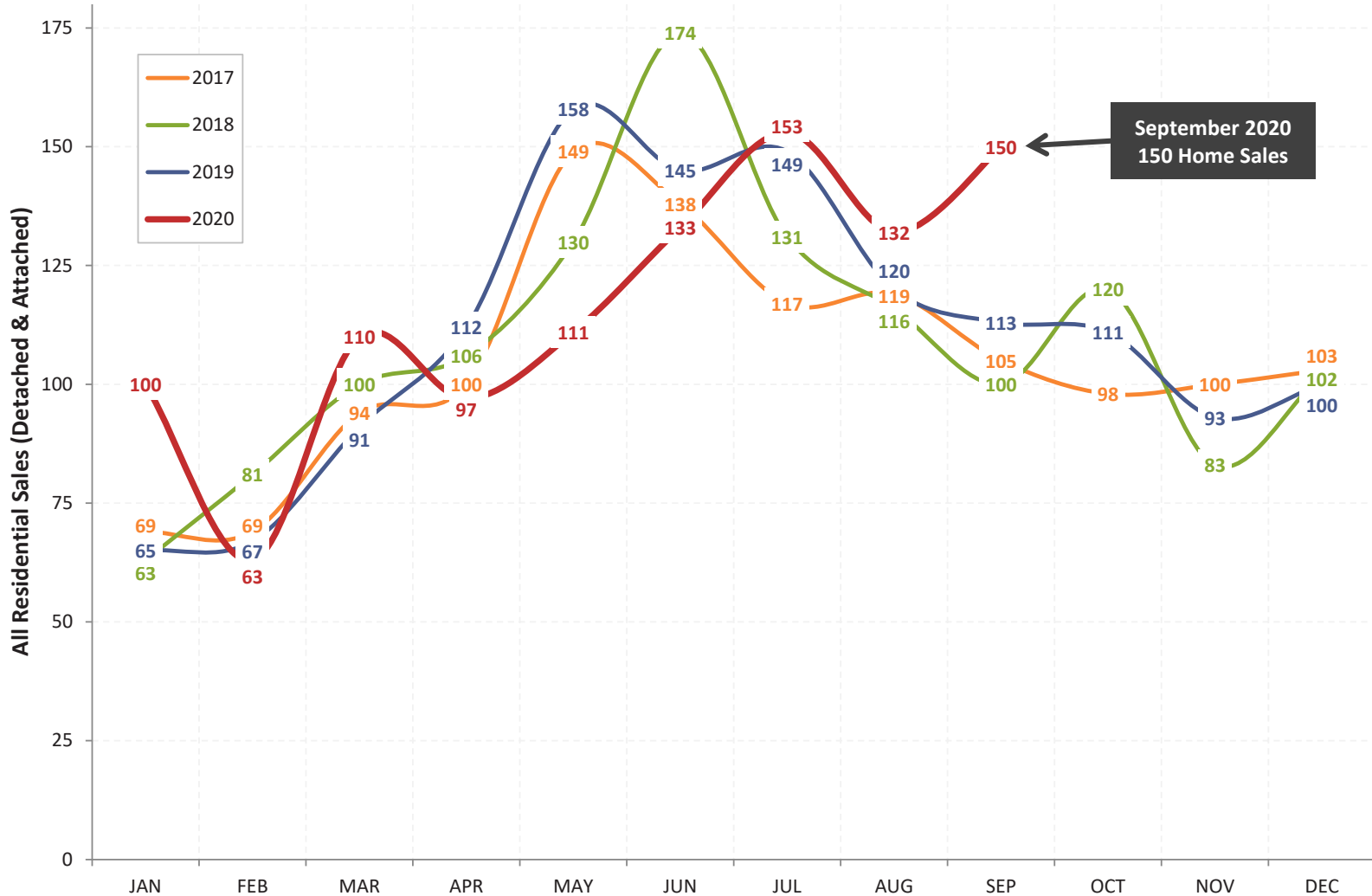
  

Median Days on Market	City of Harrisonburg			Rockingham County		
	2019	2020	% Change	2019	2020	% Change
September	6	4	-33.33%	16	8	-50.00%
Last 12 Months (Oct - Sep)	14	7	-50.00%	23	14	-39.13%

Generally, each year, more than twice as many homes sell in Rockingham County as compared to the City of Harrisonburg. Over the past 12 months, we have seen somewhat of a decline (-8%) in City home sales while we have seen an increase (+7%) in the pace of County home sales. The median sales price of homes in the

City and County have both increased - with a 15.79% increase in price in the City and a 7.43% price in the County. The median sales price is a good bit higher in the County (\$244,950) than in the City (\$220,000) though this may be a result of most townhouses being located in the City.

Harrisonburg & Rockingham County  
**Month-By-Month Home Sales History**

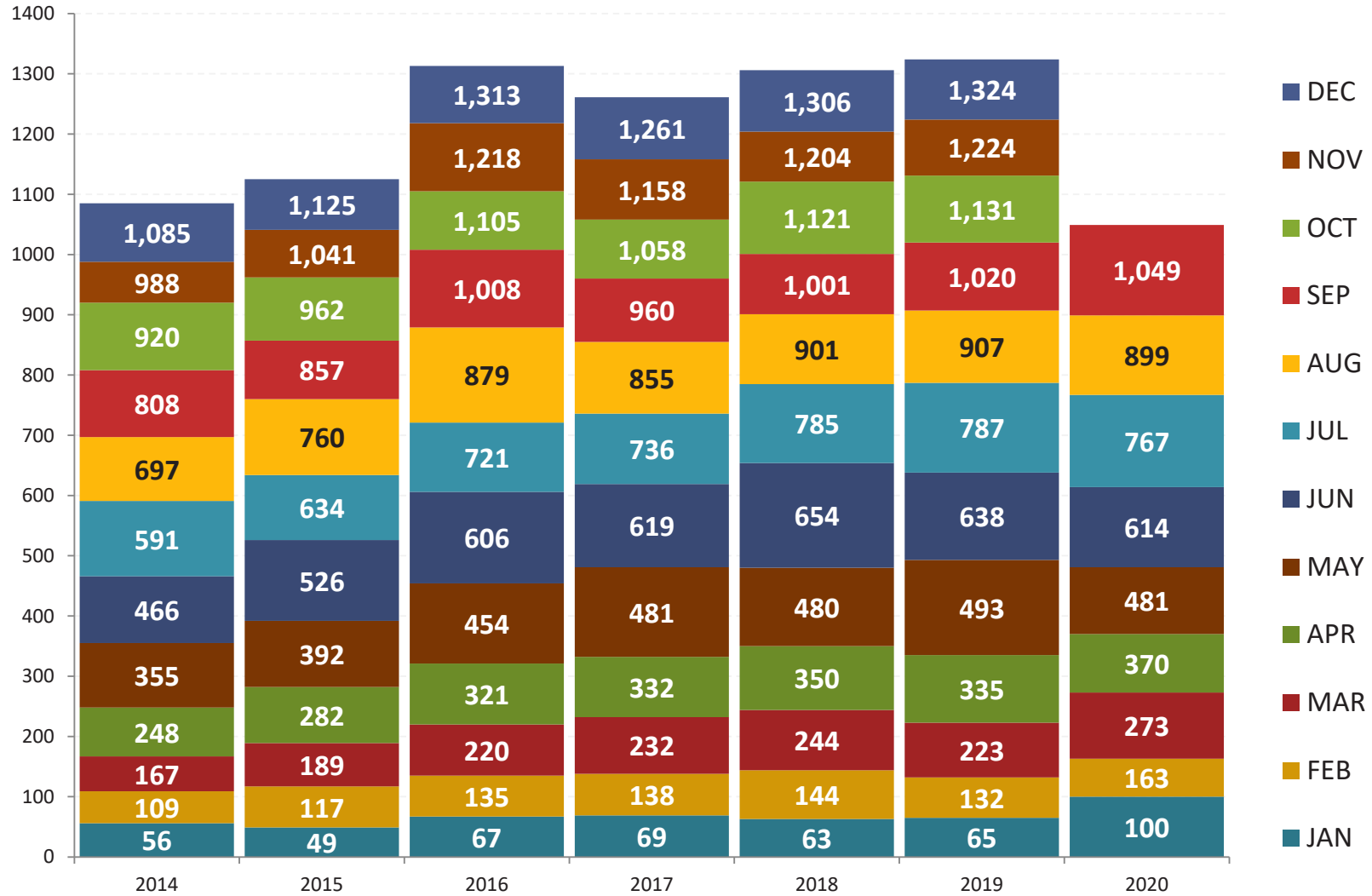


This year has been full of unexpected highs and lows when evaluating monthly home sales. We started off with a bang in January - with home sales almost twice as high as in past years - and then sales plummeted in February. They peaked again in March, but then were slower than expected in April, May and June due to COVID.

The last three months (July, August and September) have all been stronger than any recent year - and the 150 home sales seen in September is rather unheard of given that we pretty consistently see between 100 and 115 home sales during any given September. As for the rest of the year, who knows what to expect at this point!?



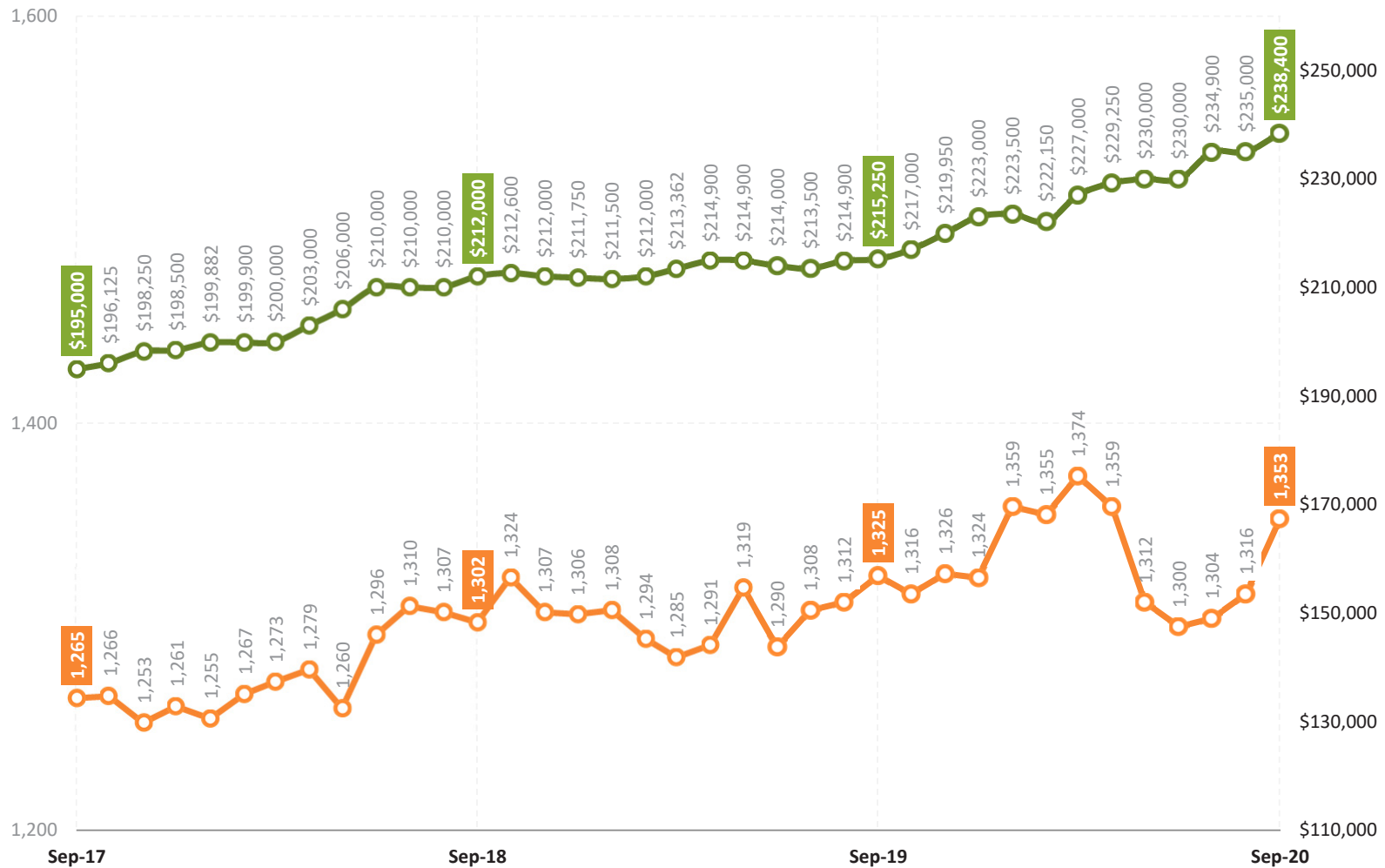
Harrisonburg & Rockingham County  
**Monthly Cumulative Residential Sales**



This colorful graph offers another way to look at the overall sales trends for the past few years in the Harrisonburg and Rockingham County housing market. As shown above, our local housing market experienced has seen steady growth over the past three years to a total of 1,324 home sales during 2019. This was the highest total

number of home sales seen in a single year for more than a decade. The pace of home sales in 2020 was the strongest ever through April, but then started to lag behind all the way through the end of August. When we pile on September's home sales, though, we see that 2020 (YTD) is back on top!

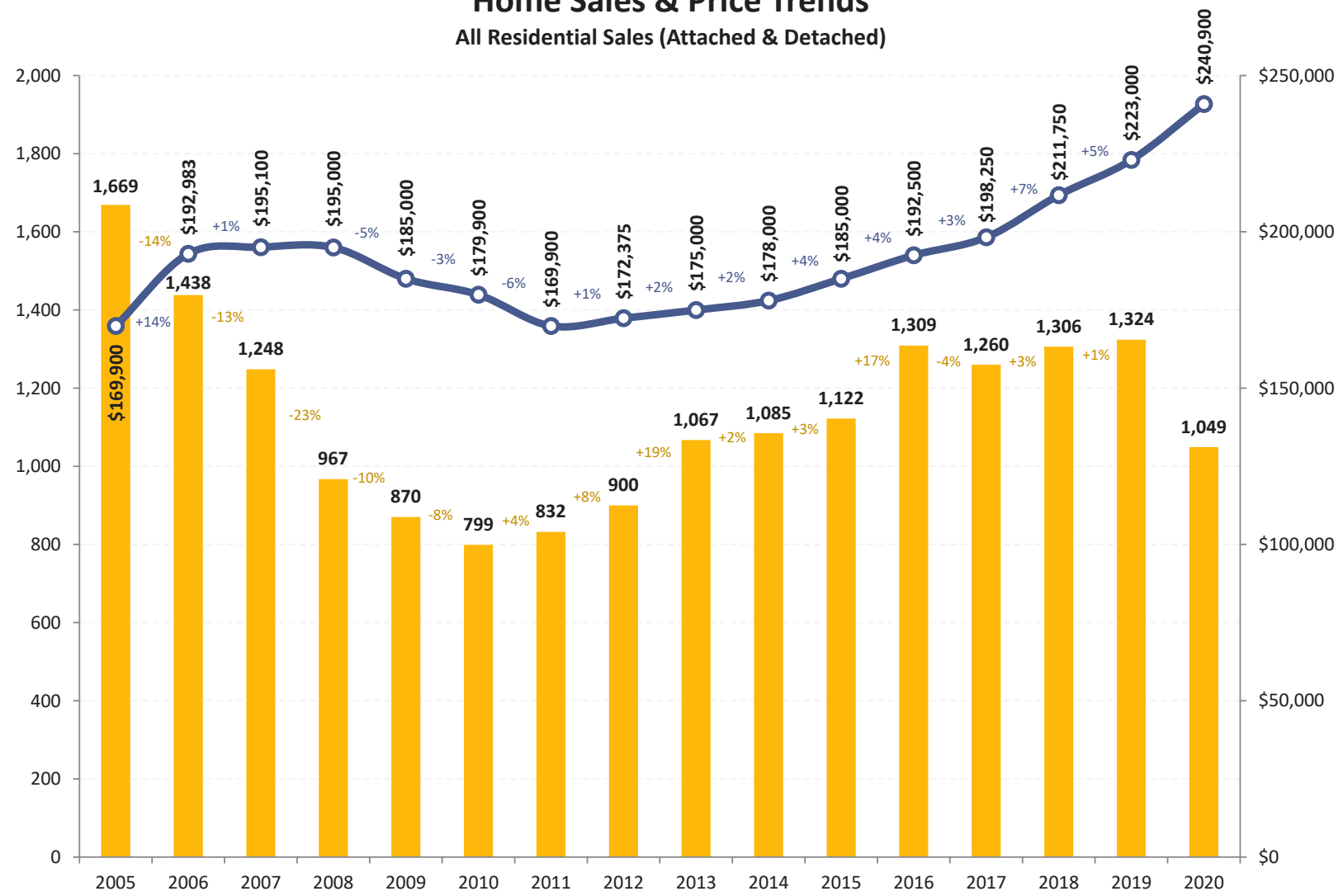
Harrisonburg & Rockingham County  
**Time-Adjusted Home Sales Trends :: All Residential Properties**  
 # Home Sales, Median Sales Price in each 12 Month Period



This graph shows a rolling 12 month trend line of the number of homes sold in the Harrisonburg and Rockingham County area, as well as the median price of the homes that sold during these time frames. Each data point shows one year’s worth of home sales, which eliminates the volatility of evaluating sales figures on a

monthly basis. After the annual pace of home sales had risen steadily for two and a half years it dipped for about four months due to COVID - though it has now mostly rebounded. Meanwhile, the median sales price keeps on climbing up to a median of \$238,400 for all home sales in Harrisonburg and Rockingham County.

Harrisonburg & Rockingham County  
**Home Sales & Price Trends**  
 All Residential Sales (Attached & Detached)

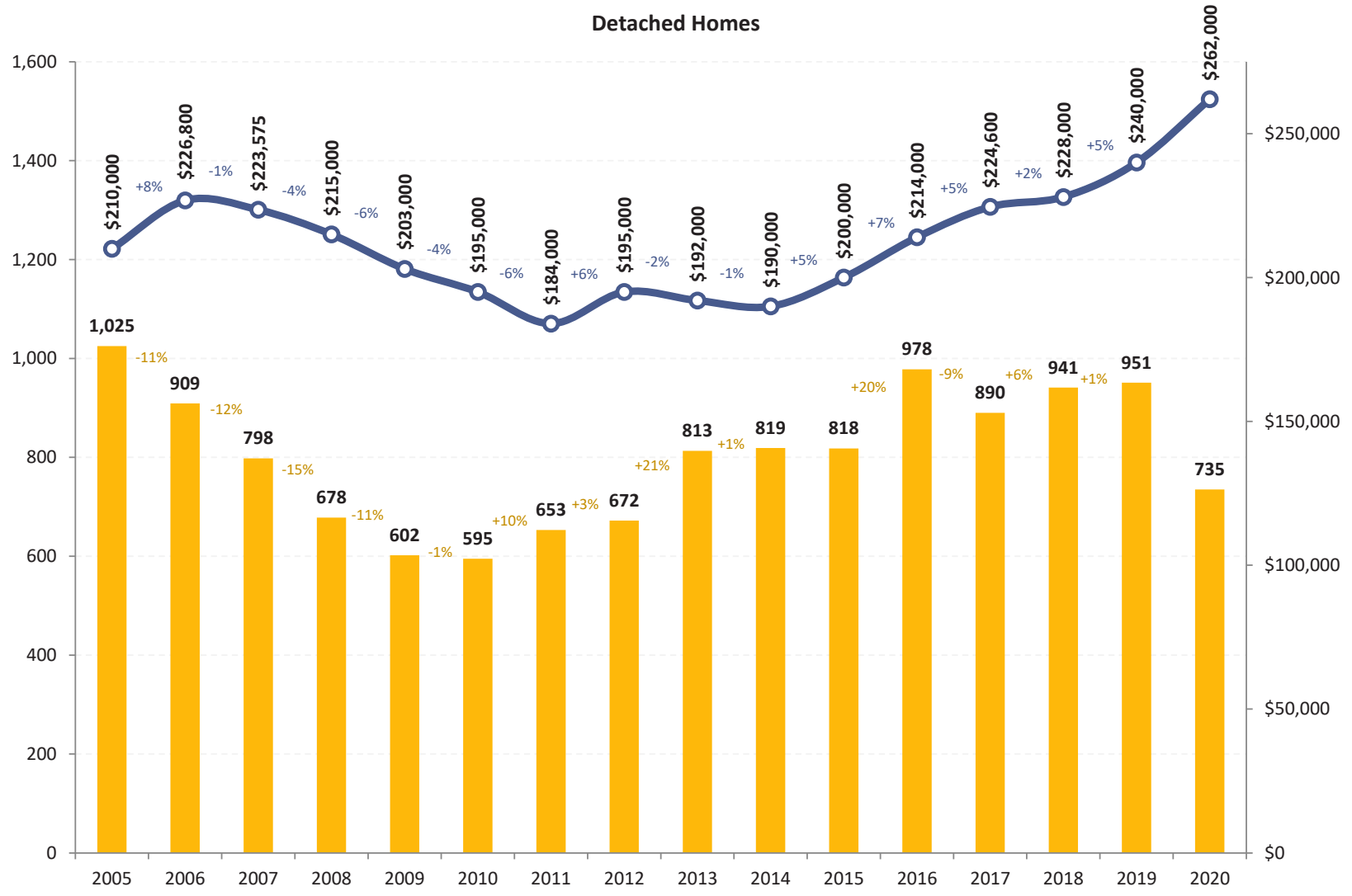


This graph provides an overall indicator of the state of our housing market, showing both the number of homes being sold each year since 2005 (yellow bars) as well as changes in the median sales price during the same time period (blue line). Over the past nine years we have seen rather steady increases in the number of homes

sold each year in Harrisonburg and Rockingham County - up to 1,324 last year. The median sales price has also been consistently increasing for eight years now, up to an all time high last year of \$223,000. Thus far in 2020, the median sales price seems to be rising even faster than in recent years.



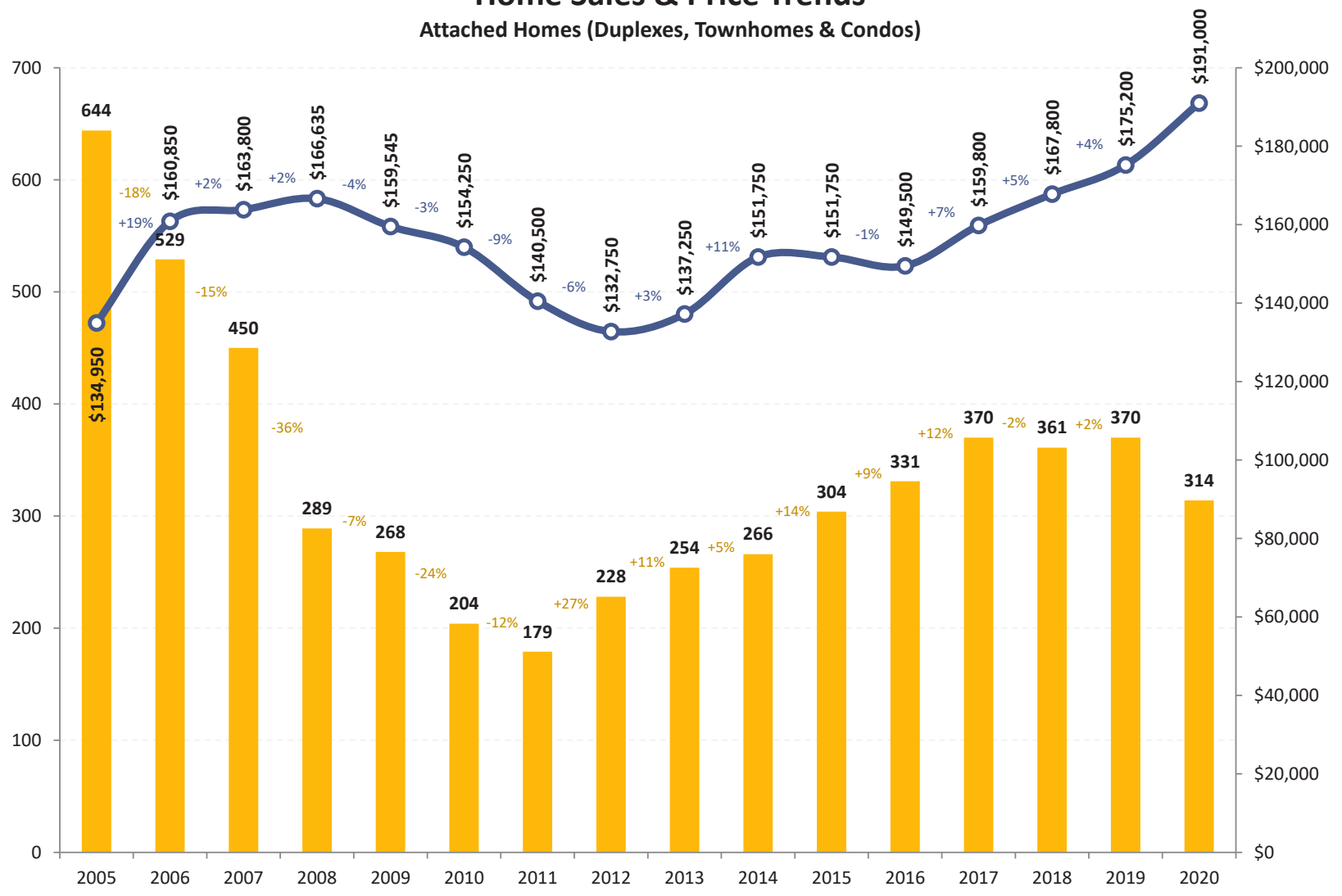
Harrisonburg & Rockingham County  
**Home Sales & Price Trends**  
 Detached Homes



The single family home market in Harrisonburg and Rockingham County has improved rather steadily over the past nine years with increases almost every year in the number of homes sold. Technically, we saw a peak in 2016 that we have not yet matched, though there were slight increases between 2017 and 2018 as well

as between 2018 and 2019. The median sales price of these single family homes has also steadily increased over the past five years -- from \$190,000 to last year's median sales price of \$240,000. The median sales price is showing signs of heading even higher, even faster, this year!

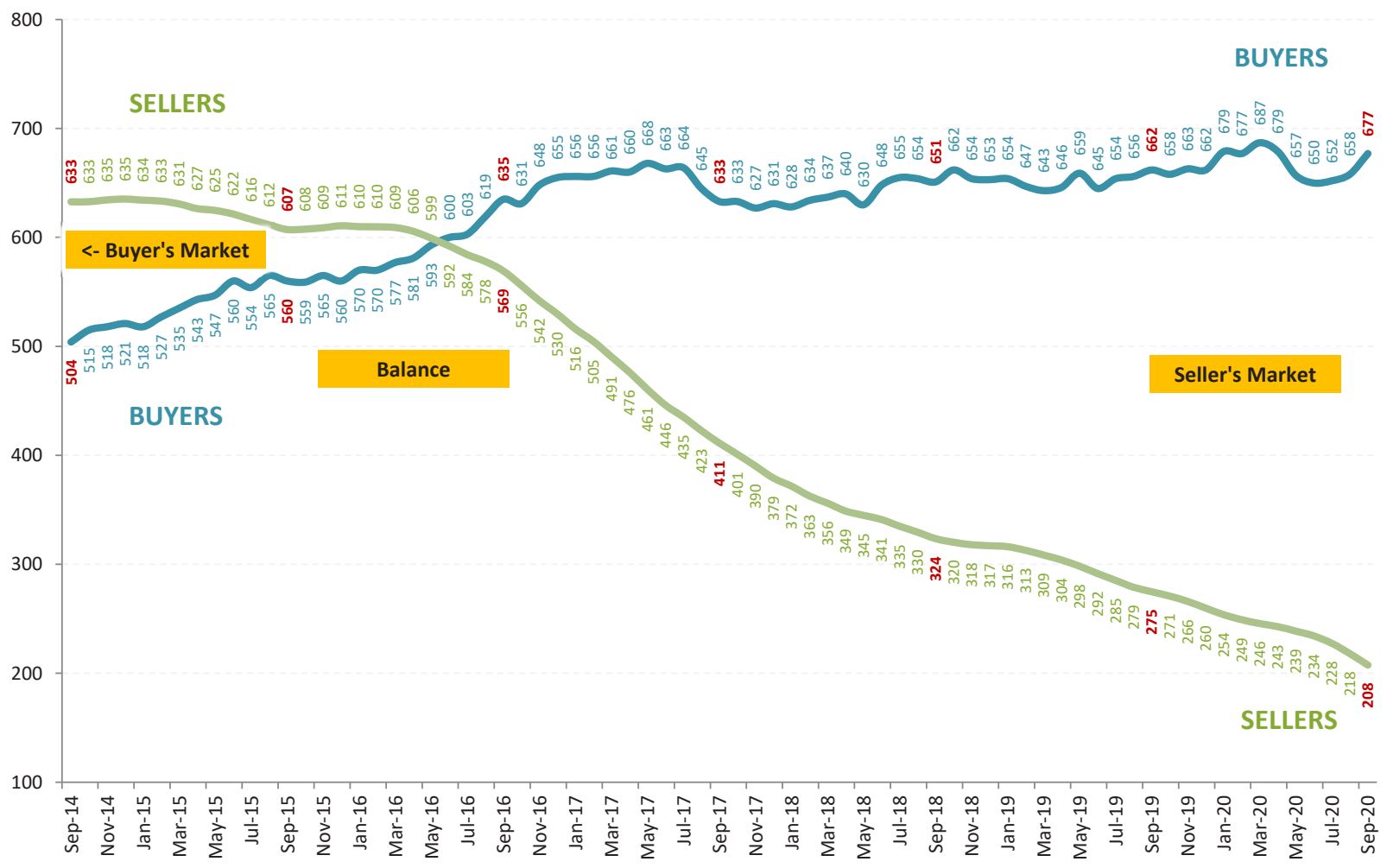
Harrisonburg & Rockingham County  
**Home Sales & Price Trends**  
 Attached Homes (Duplexes, Townhomes & Condos)



The pace of sales of attached homes (duplexes, townhouses and condos) rose steadily between 2011 and 2017 before declining slightly (-2%) in 2018 -- but then increasing slightly (+2%) in 2019. These recent years of declining numbers of sales is likely correlated to fewer new townhouses being constructed in this area. Over

the past three years, the median sales price of attached homes has steadily risen to the high of \$175,200 that we saw in 2019 -- the highest median sales price on record for attached homes in Harrisonburg and Rockingham County. Thus far in 2020, the median sales price seems to be headed even higher, even faster!

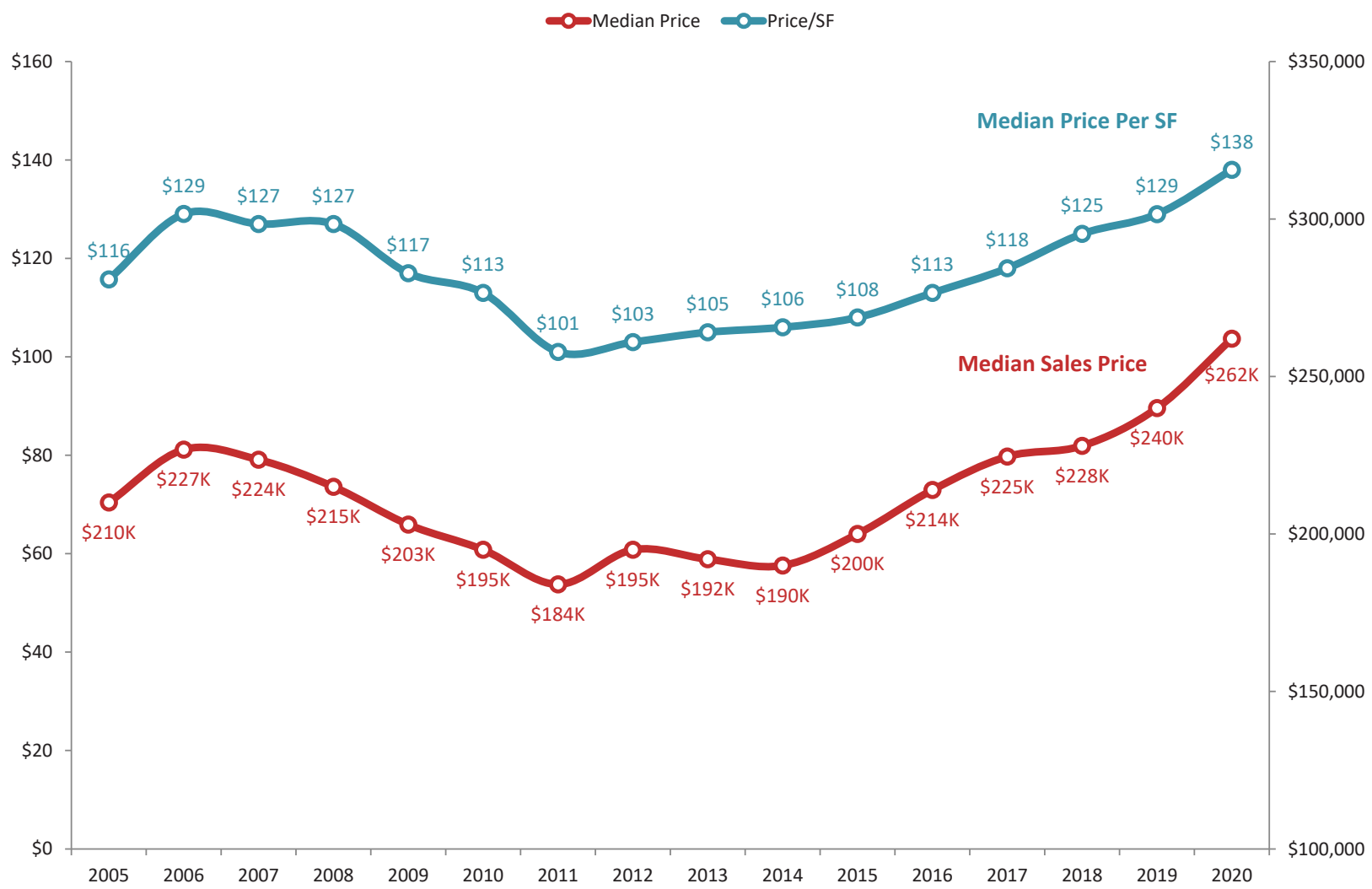
Harrisonburg & Rockingham County  
**Market Balance between Buyers and Sellers**  
 Assuming Six Months of Housing Supply is a Balanced Market



Most housing market analysts consider six months of inventory (active listings) to be an indicator of a balanced market (between buyers and sellers). The "BUYERS" trend line above is illustrating how many buyers are buying in a six month period. The "SELLERS" trend line above is illustrating how many sellers are in the market

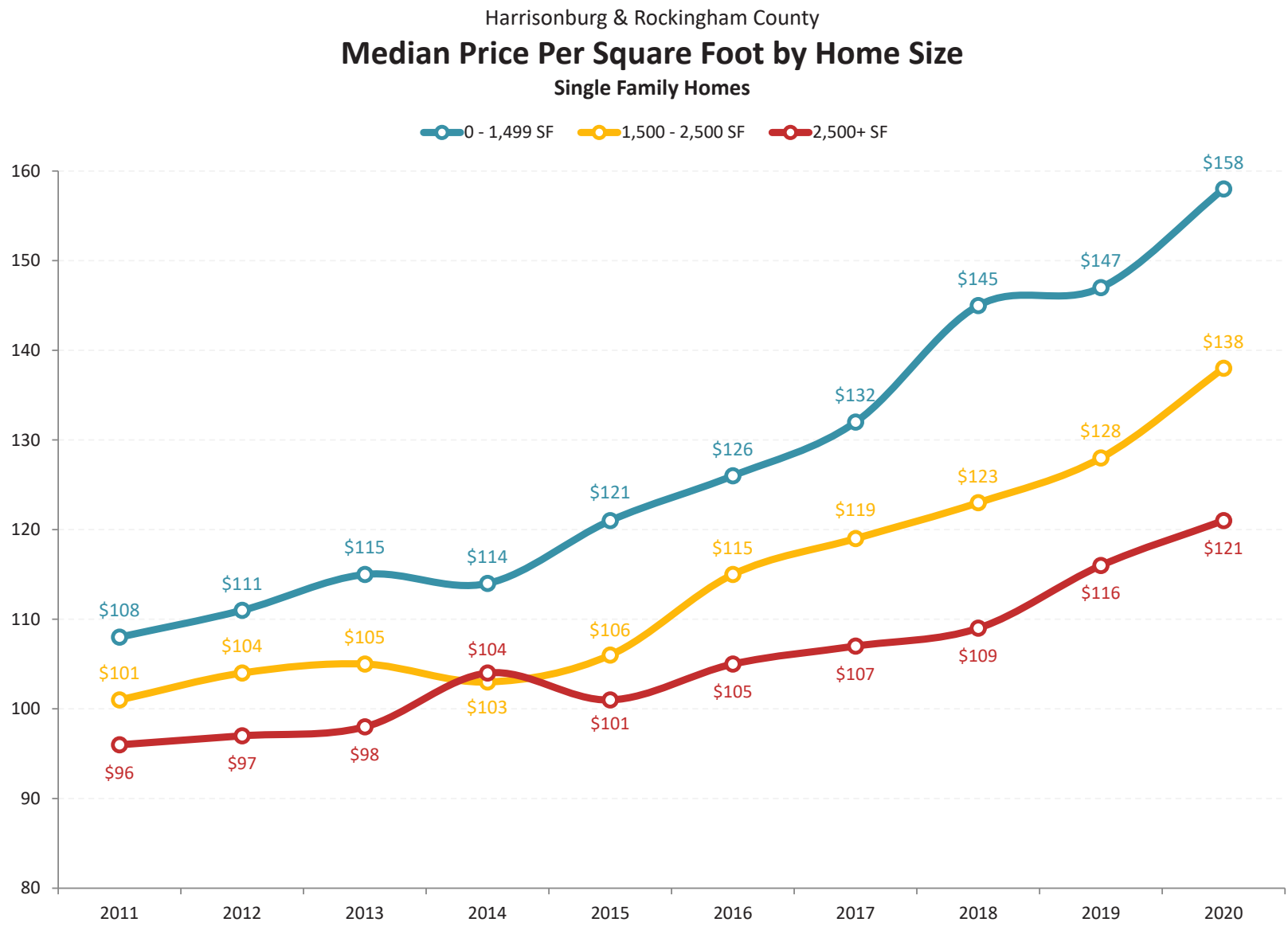
(active listings) at any given time. Over the past several years we have seen a steady increase in buyers and a declining number of sellers. In June 2016, these two trajectories crossed, and there are now many more buyers buying in a six month period than there are homes for sale -- though the buying pace has leveled off.

Harrisonburg & Rockingham County  
**Median Price vs. Price Per SF of Detached Homes**



In addition to monitoring home values by overall median sales prices in our market, it can be insightful to examine the median price per square foot of homes that are selling. The graph above shows the median price per square foot of all single family homes sold over the past 15 years. The value trend captured by this graph is quite

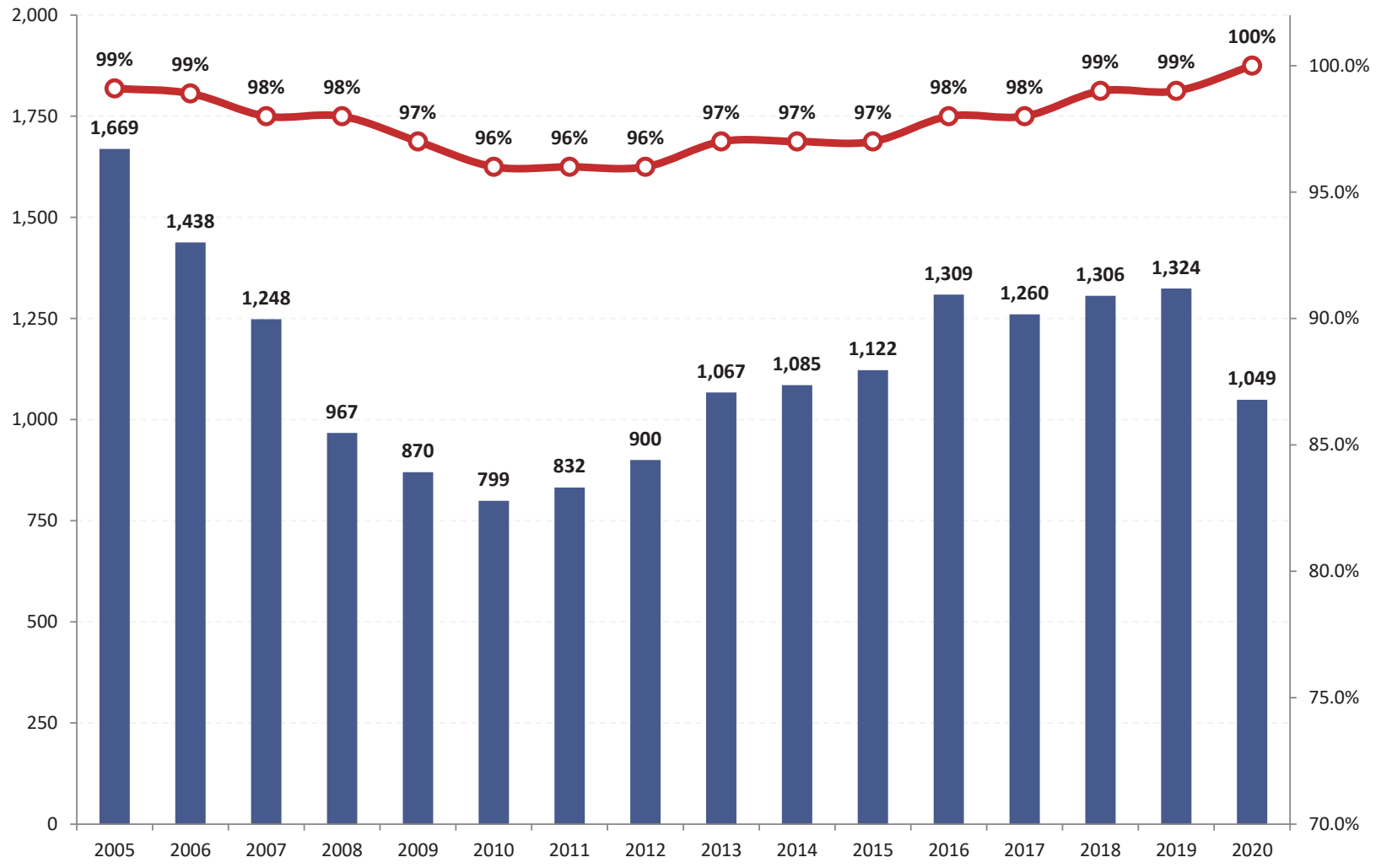
similar to the trend shown in the single family home median sales price during the same time, which validates that assumed set of changes in home values. Over the past several years (2015 through 2020) we have seen increases in the median sales price as well as the median price per square foot of single family homes.



Price per square foot of single family homes certainly varies for many reasons, including the age, location, lot size and structural characteristics of each home sold. However, there are some similarities in homes of similar sizes. Looking at 2019 figures, this graph illustrates that the median price per square foot of larger homes

(2500+ SF) was a good bit lower (\$116/SF) than that of homes with less than 1500 SF (\$147/SF) during 2019. These values cannot be used as an absolute standard against which the value of any home can be measured, but they can provide some helpful guidance when trying to determine the value of a home.

Harrisonburg & Rockingham County  
**Median List Price to Sales Price Ratio**  
 within the context of Home Sales Pace

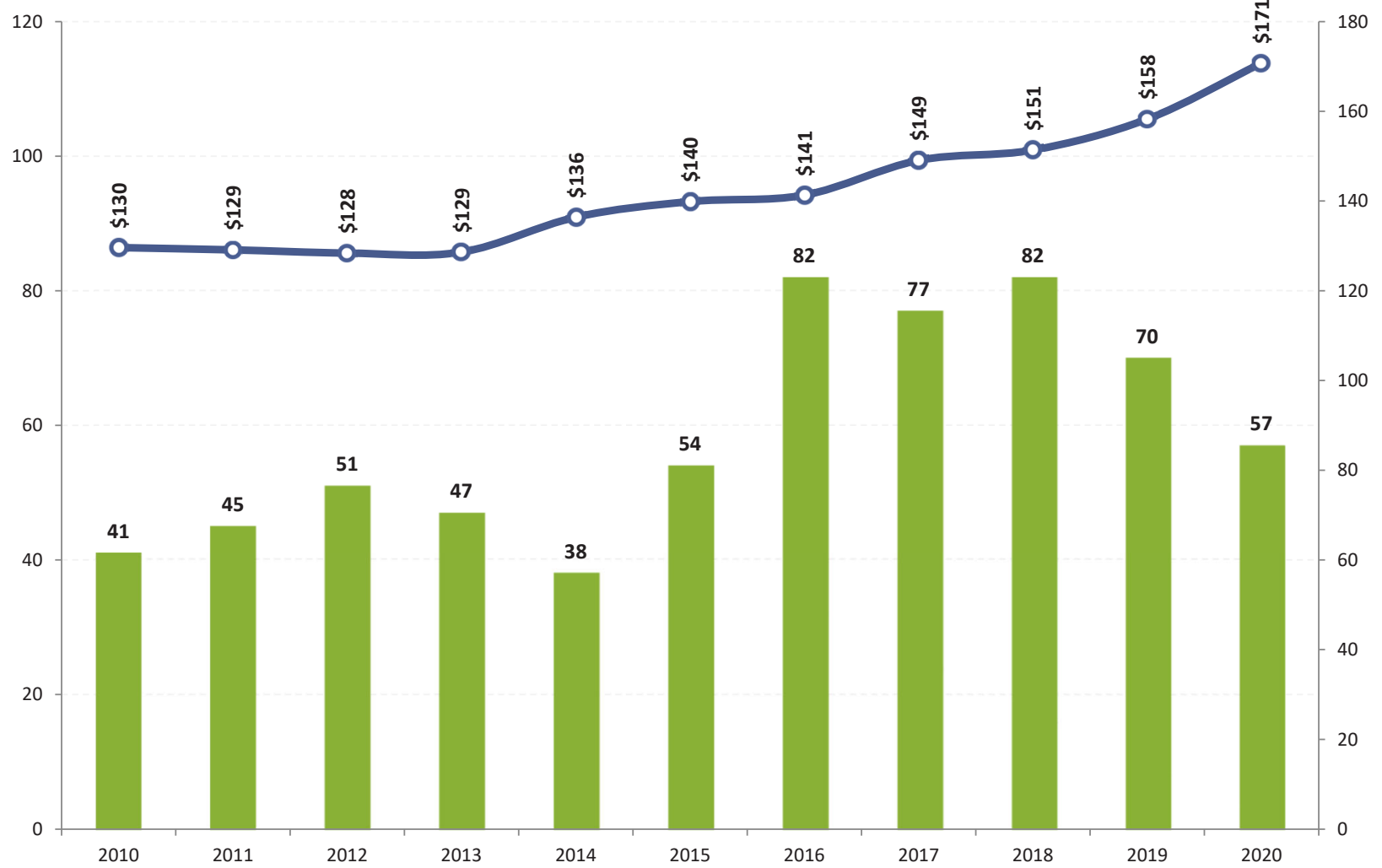


This graph shows the average list price to sales price ratio (red line) over the past 15 years as compared to the overall pace of home sales. At the peak of the housing boom (2004-2006) sellers were able to obtain a median of 99% of their asking price. Then, when the pace of home sales slowed (through 2010) this metric dropped

to 96%, where it stayed for three years. Sellers started selling for slightly more in 2013-2015 when they could obtain 97% of their list price. This increased to 98% in 2016 (remained there in 2017), and has been holding at 99% since 2018, but has now popped up to a median of 100% in 2020 as of the end of June.



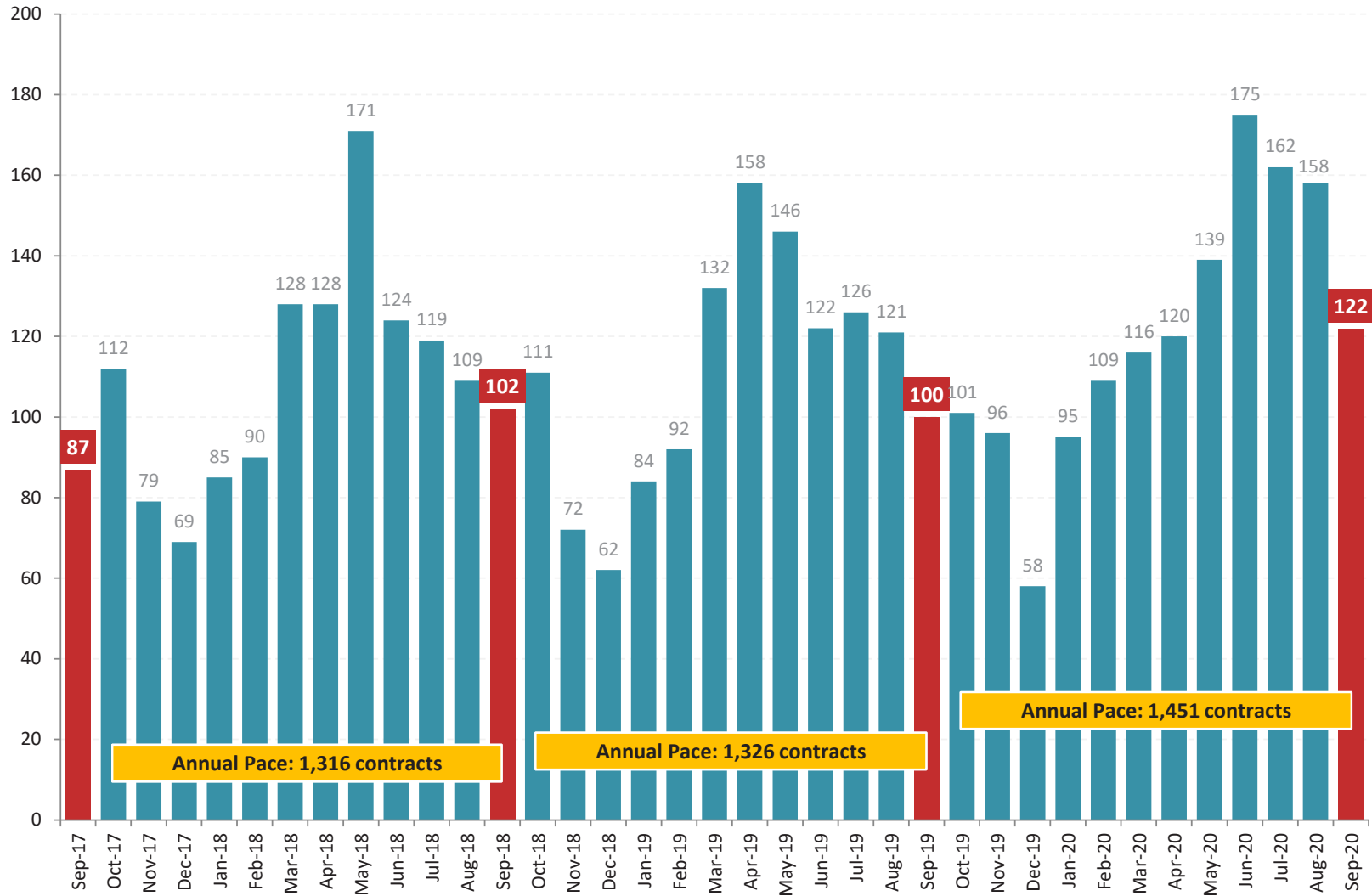
## Harrisonburg & Rockingham County New Construction Detached Home Sales Trends Number of Sales, Median Price Per Square Foot



New home builders have been building more homes over the past four years (70 - 82 per year) than seen during the preceding six years. These figures, of course, only represent new homes being marketed through the MLS. Plenty of additional new homes are built by local home builders on lots already owned by the person who

will live in the home - and thus they do not show up in the new home sales metrics above. When looking just at these new home sales, we see a steady increase in the price per square foot of homes being built and sold over the past ten years.

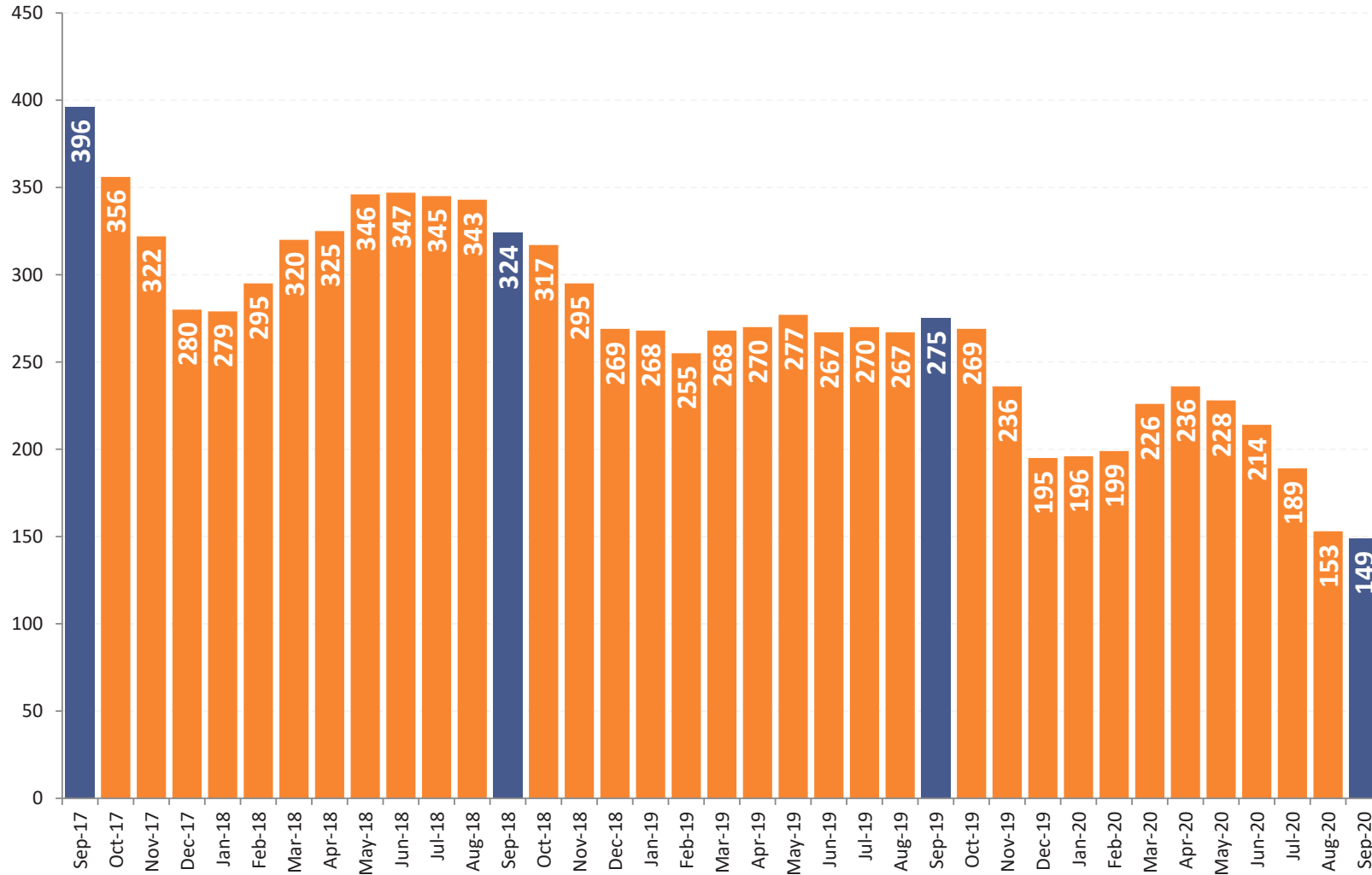
Harrisonburg & Rockingham County  
**Buyers Per Month Committing to Buy Properties**



Buyers were out in full force this summer! After a slower start to the year, buyers (and sellers) signed a surprisingly high number of contracts in summer 2020 in Harrisonburg and Rockingham County! Last summer, 369 buyers (and sellers) signed contracts - but this summer a total of 495 buyers and sellers signed contracts!

This strong summer of buying activity, plus a 22% increase in September contract activity has lead to an annual pace of 1,451 contracts being signed during the past 12 months as compared to only 1,326 contracts during the prior 12 months!

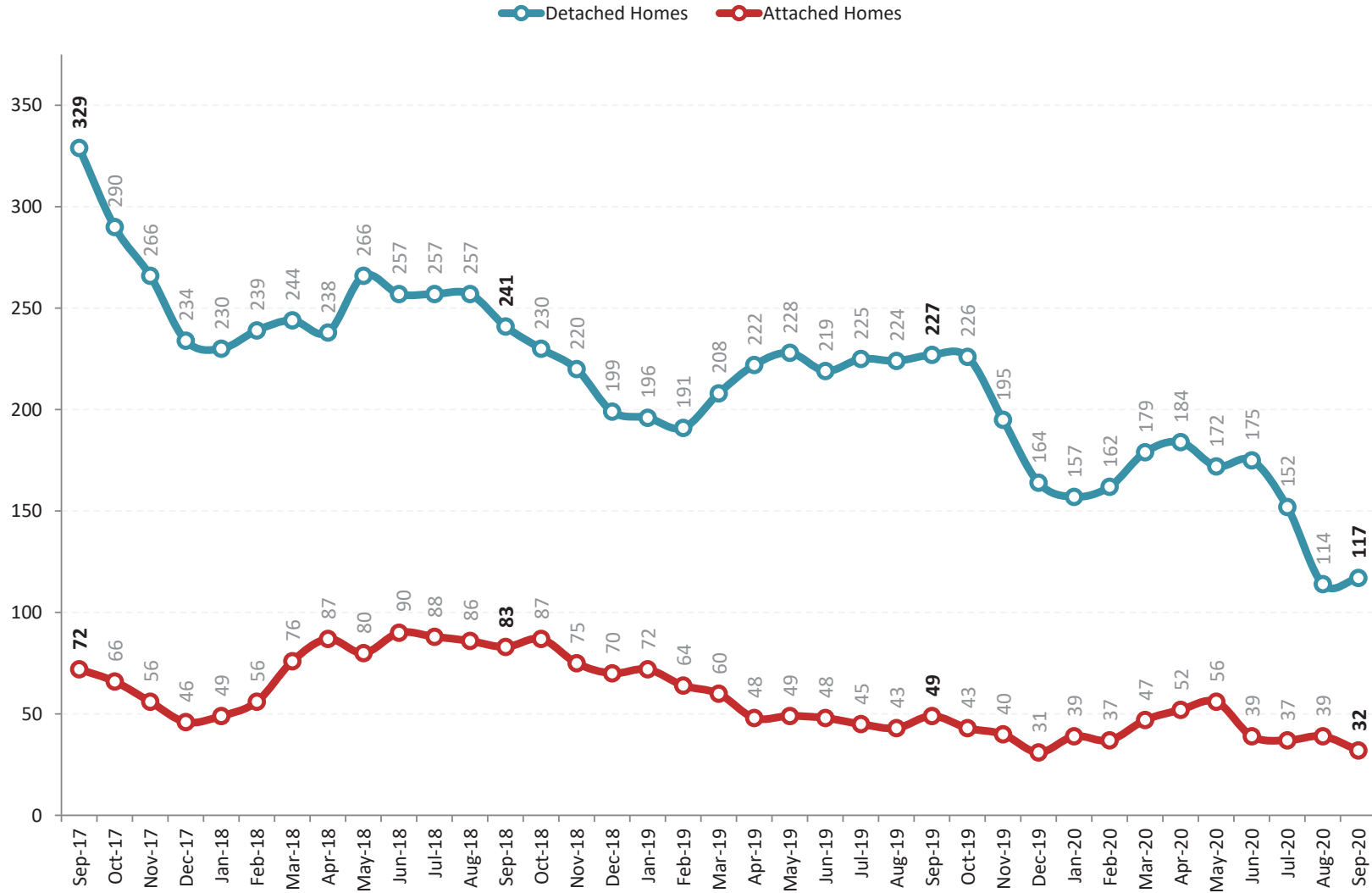
Harrisonburg & Rockingham County  
**Inventory Levels**  
 (end of month)



Over the past several years, inventory levels have dipped lower and lower and lower. This has not, though, been accompanied by a decline in the pace of home sales. So -- if just as many (or more) buyers are buying, how are they doing it if inventory levels are so low? They're doing it with speed. The pace of home sales

can increase, with inventory levels declining if the median "days on market" is also declining, which is definitely the case in our local market. So, plenty (maybe, maybe not) homes are being listed for sale, but they are then going under contract quickly, which keeps inventory levels low but the pace of home sales high.

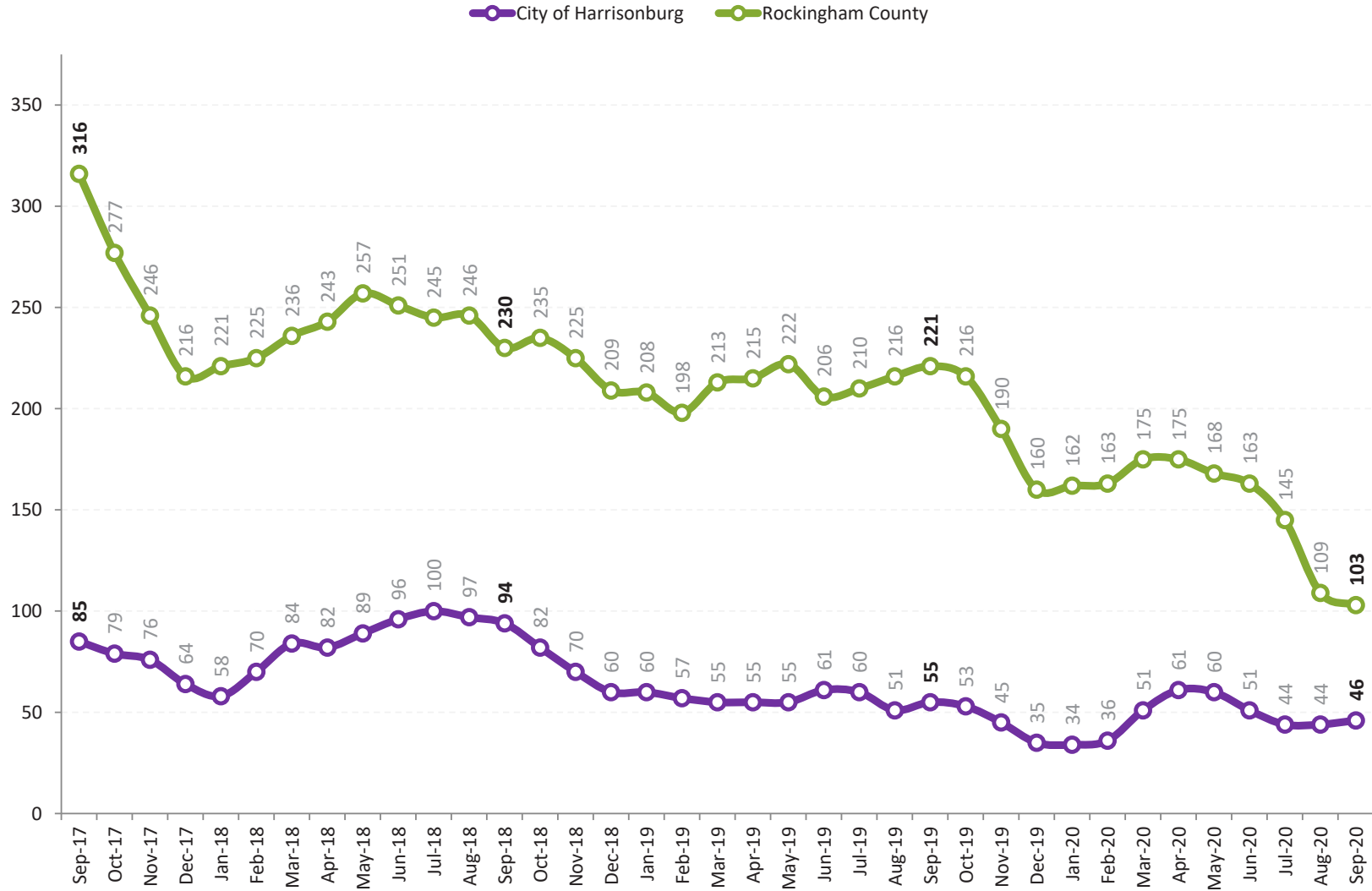
## Harrisonburg & Rockingham County Inventory Levels by Property Type



This graph examines the differences in inventory levels over time when examining only single family homes as compared to attached dwellings (townhouses, duplexes, condos). The number of detached homes for sale has decreased by 48% over the past year, while the number of attached homes (townhouses, duplexes and

condos) for sale has declined by a slightly more modest 35% over the past year. I was hopeful that we would start to see inventory levels rise as we get progressed through summer of this year -- but as soon as more sellers have decided to list their homes for sale, buyers are then turning around and buying them.

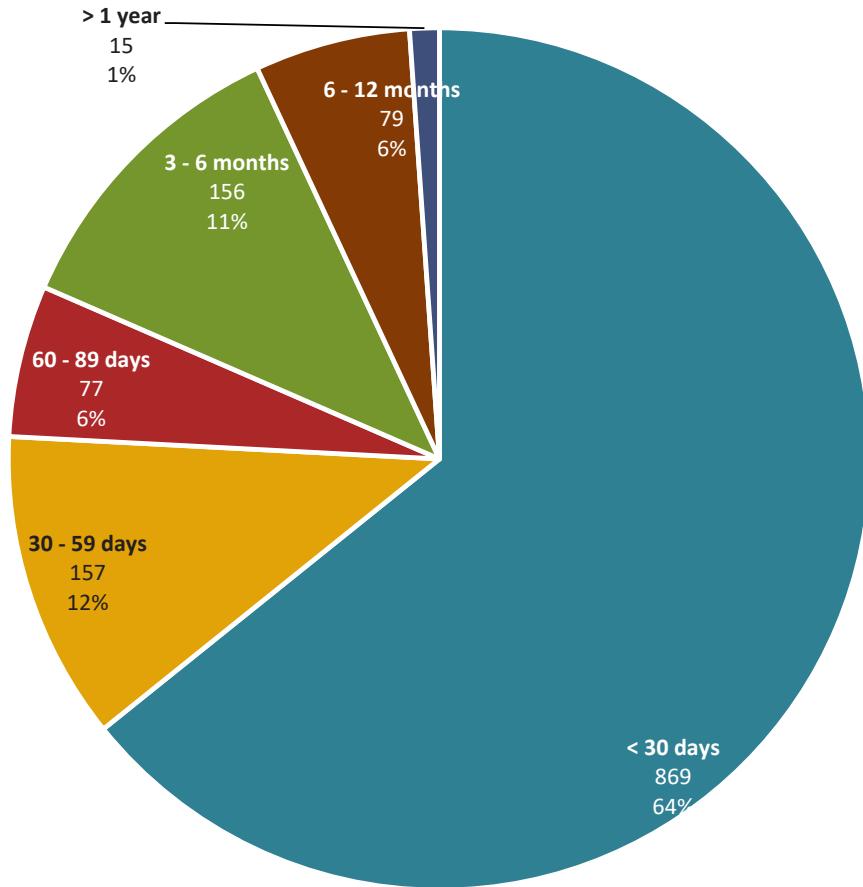
Harrisonburg & Rockingham County  
Inventory Levels by Property Location



Inventory levels have fallen 53% in Rockingham County over the past year while City inventory levels fell 16% during the same timeframe. Of note -- there are more than twice as many home sales and homes for sale in the County as compared to the City. Low inventory levels are much more of an issue in the City right now if we

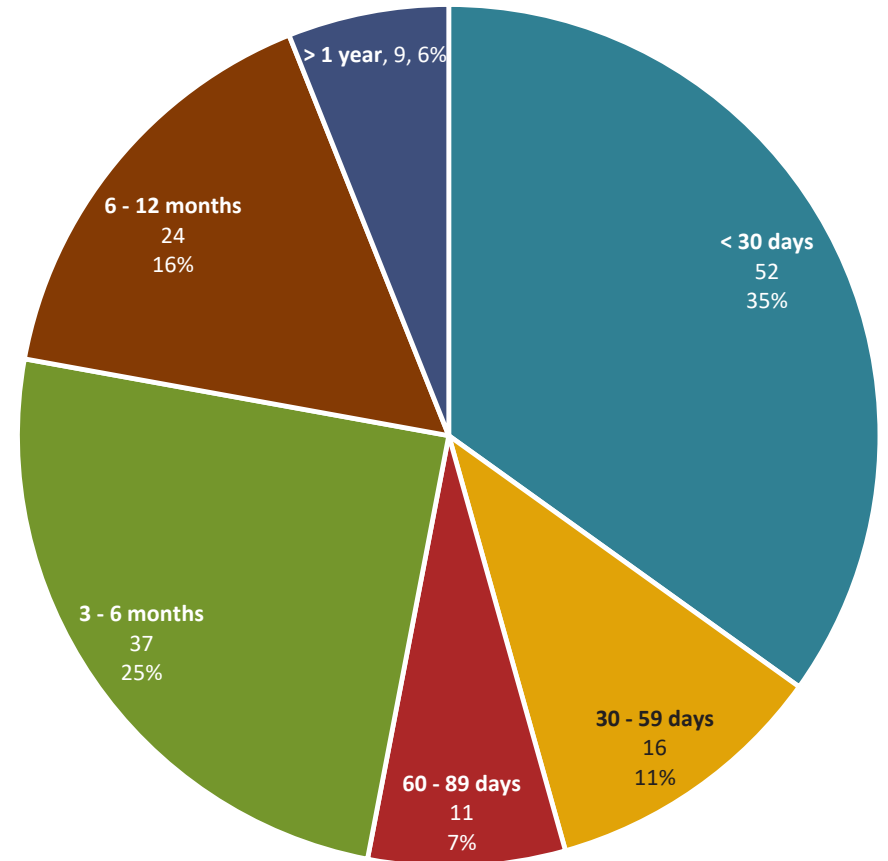
look at both sellers (supply) and buyers (demand). This is likely leading to the faster increases in median sales price in the City, and the lower median days on market in the City as compared to the same metrics in the County.

Harrisonburg & Rockingham County  
**Days on Market Analysis of Sold Properties**  
 Residential Listings Sold in the Past 12 Months



**Median Days On Market: 12**

Harrisonburg & Rockingham County  
**Days on Market Analysis of Active Listings**  
 Active Residential Listings



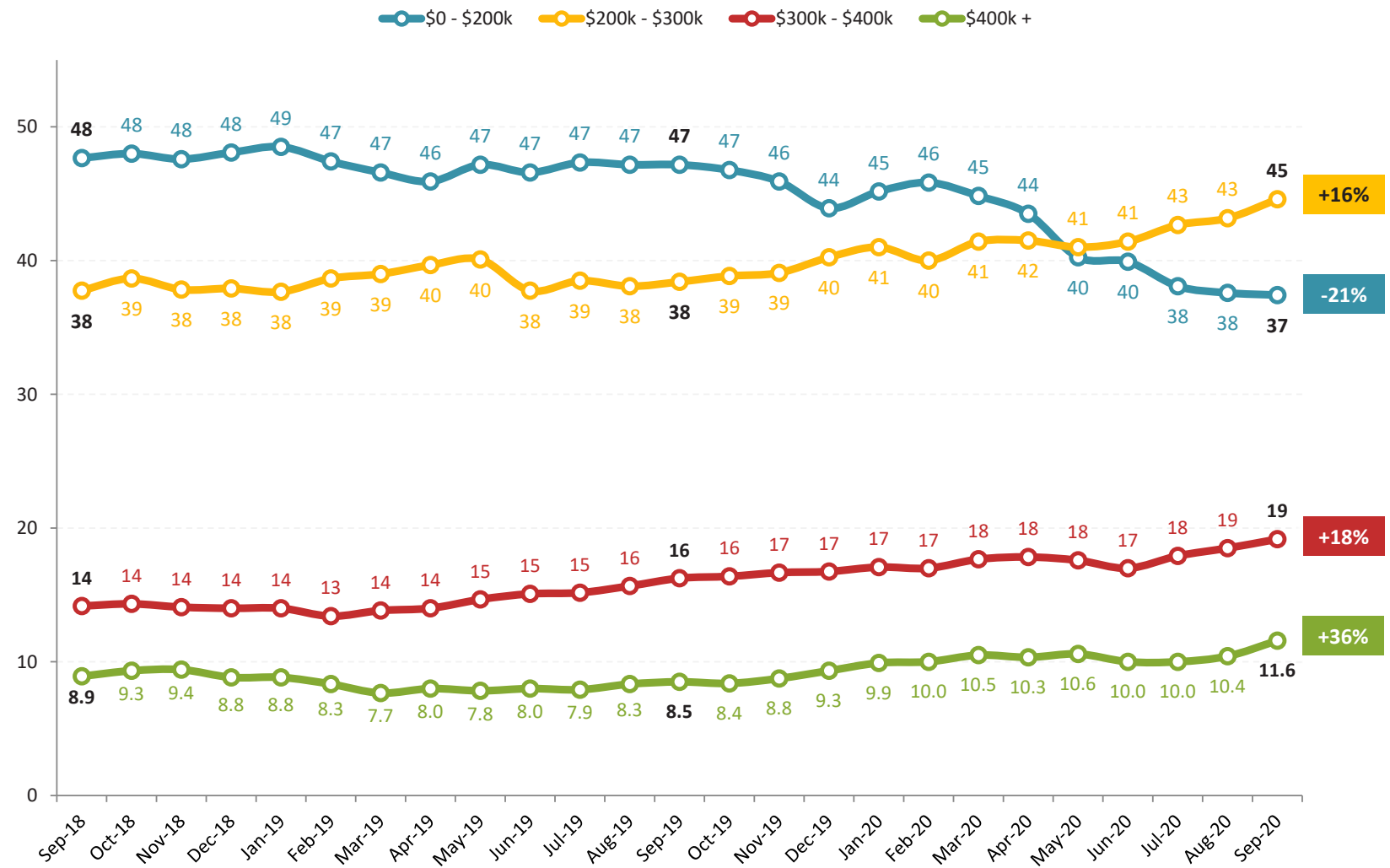
**Median Days On Market: 81**

Declining inventory levels are contributing to an overall decline in the time it takes to sell a home in Harrisonburg and Rockingham County. The current median “Days on Market” is 12 days for homes that have sold in the past year. Remarkably, 64% of homes that have sold in the past year have gone under contract within 30 days

of having hit the market. Combine that with those that went under contract during the second month on the market, and you’ll find that 76% of homes that sell go under contract within 60 days. The graph to the right, above, shows the length of time that each active listing has been on the market for sale.



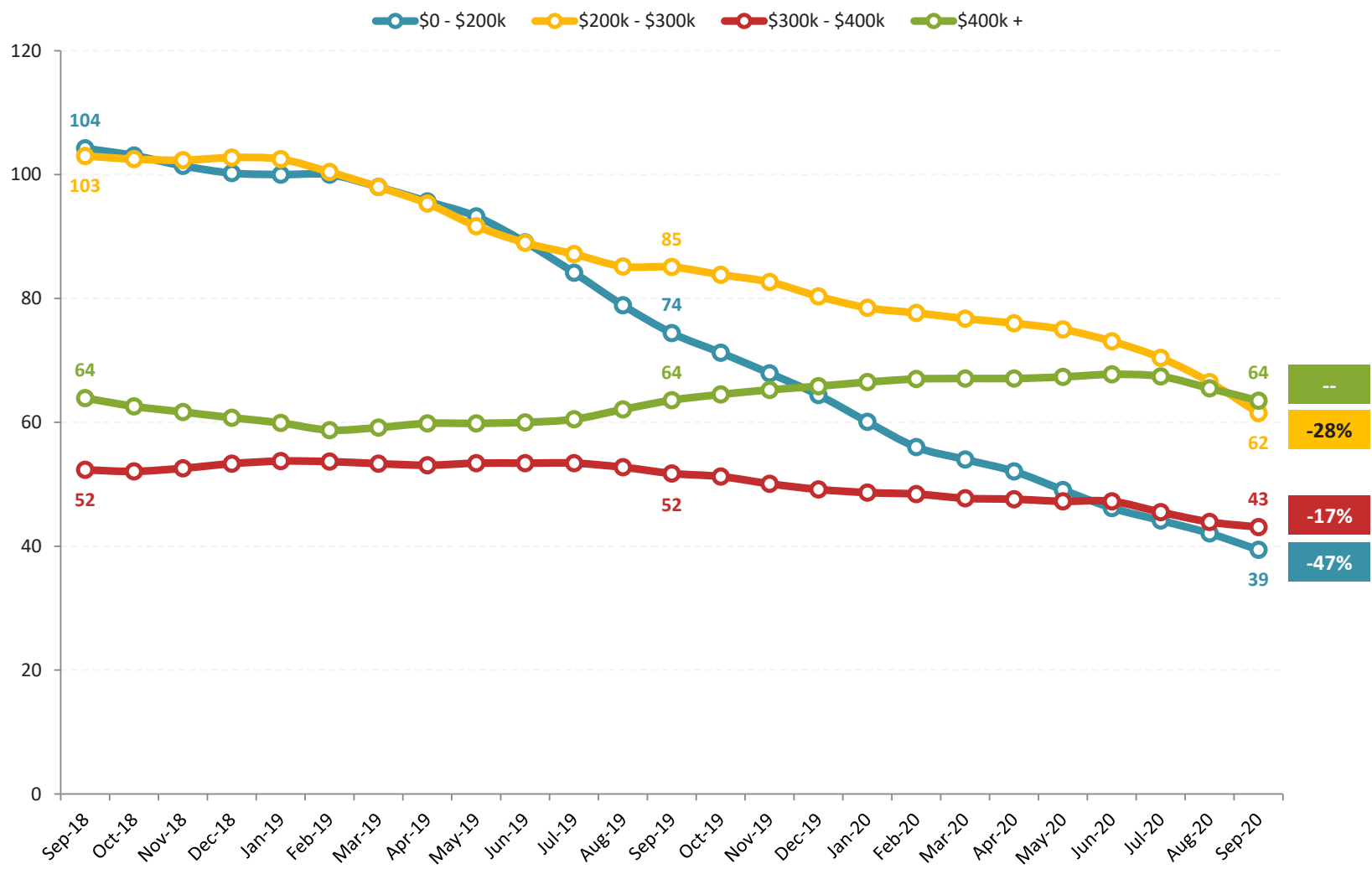
Harrisonburg & Rockingham County  
**Home Sales by Price Range**  
 (Average of Past 12 Months)



The pace of home sales in Harrisonburg and Rockingham County varies significantly based on price range. The graph above shows the average number of home sales per month (given a 12-month average) as we have passed through the past two years. Home sales have been declining over the past several years in the “under

\$200K” category -- though likely because of limited inventory, and fewer properties existing in this range based on increasing home values. We have seen year-over-year increases in all three of the other price ranges (\$200K-\$300K, \$300K-\$400K, \$400K+) over the past year.

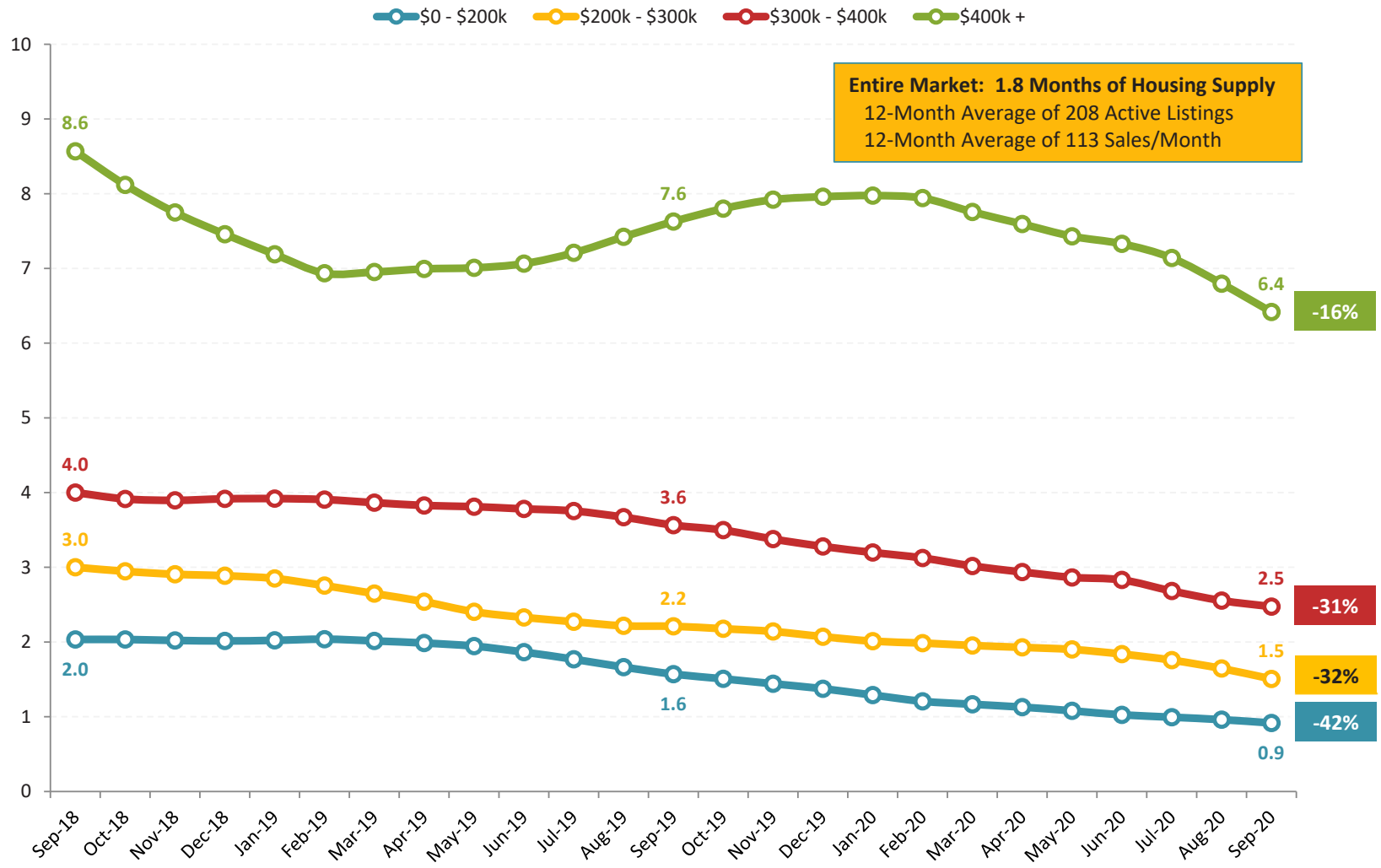
Harrisonburg & Rockingham County  
**Inventory Levels by Price Range**  
 (trailing 12 months)



Inventory levels shift up and down seasonally, so this graph (now) looks at changes in average inventory over a 12 month period. We are seeing different trends in inventory levels by price range with the most notable change being the 47% decline in inventory levels under \$200K. The only price range where we are not seeing

decreases in average inventory levels is the over \$400K price range where we have seen essentially no change over the past year. Some of these changes in inventory levels are due to changes in market value (increases) over the past few years, but that cannot account for all of the changes in inventory levels.

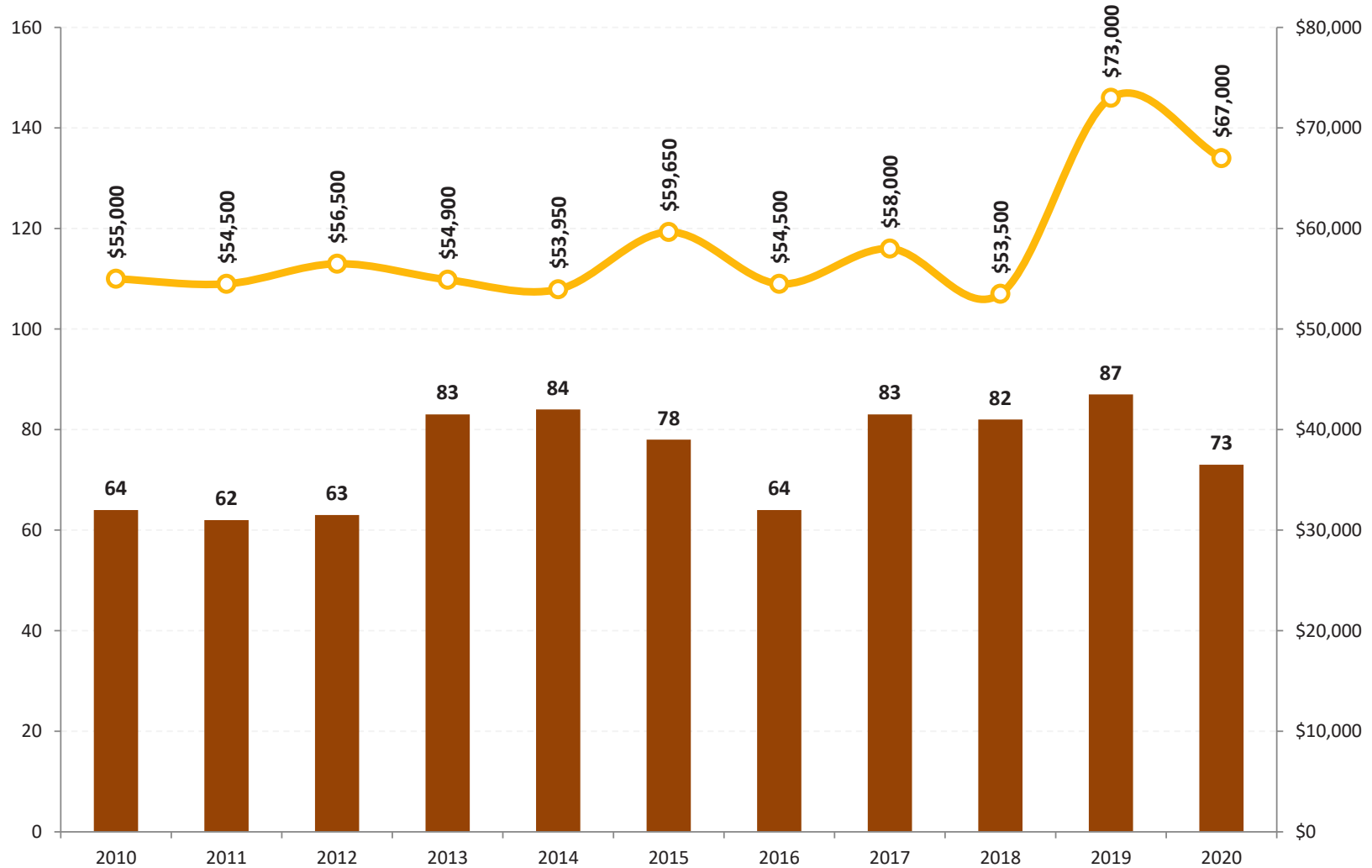
Harrisonburg & Rockingham County  
**Months of Housing Supply by Price Range**  
 (trailing 12 months)



With so many home sales (lots of buyers) and so few homes on the market (not so many sellers), there are low levels of supply in some price ranges in our local real estate market. The graph above illustrates that while it would take approximately seven months to sell all of the homes currently for sale over \$400K if the same

number of buyers bought each month as have been buying (on average) over the past 12 months and if no new listings came on the market -- but it would take less than one month (!!) to burn through the under \$200K inventory. Many consider a six month supply to be a balance between buyers and sellers.

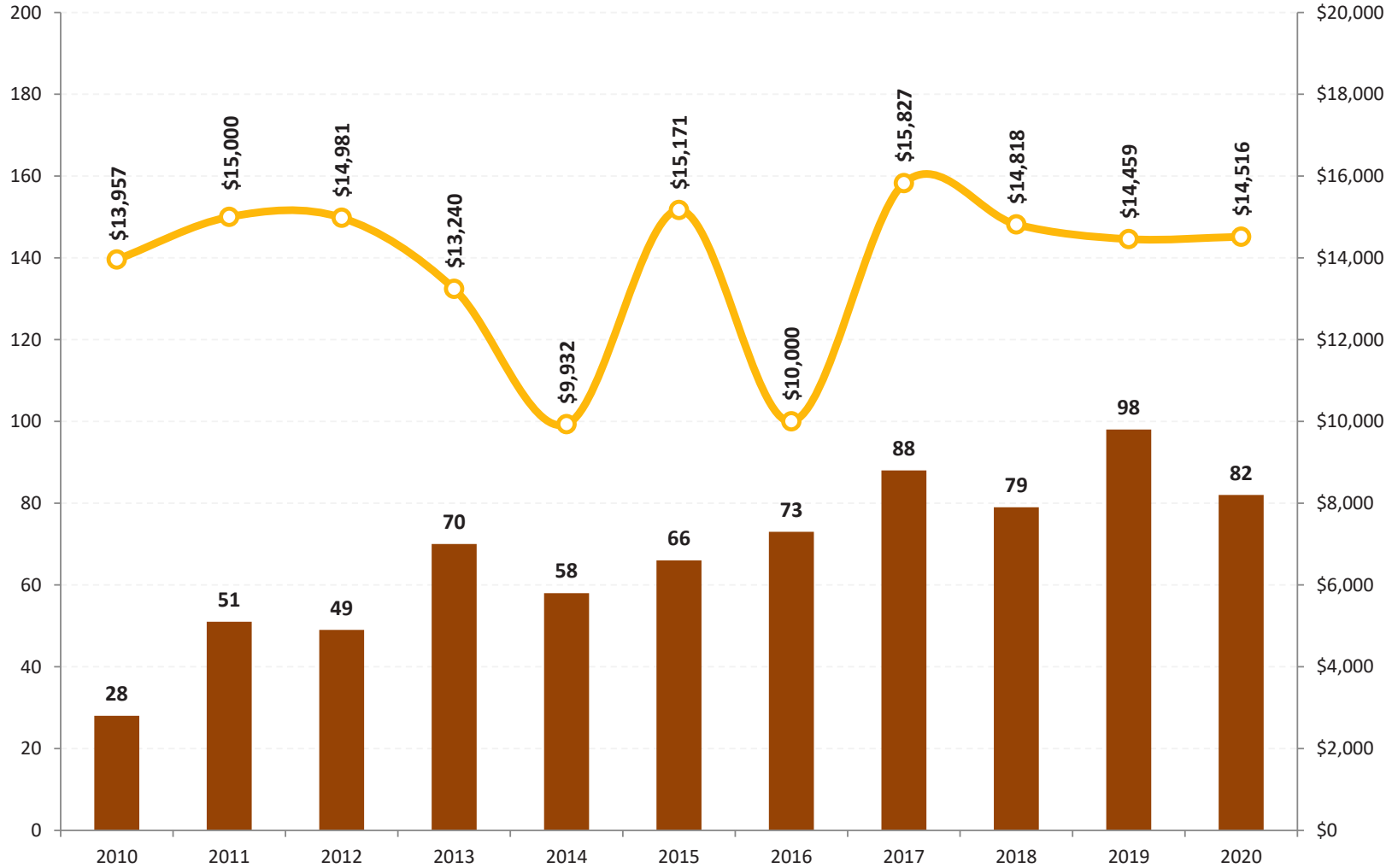
Harrisonburg & Rockingham County  
**Lot Sales & Median Prices**  
 less than 1 acre



With the exception of 2016, we have seen between 78 and 90 lot sales of less than an acre for each of the past seven years. This is a sharp decline from the 260 - 400 lot sales seen in 2002-2005, but it is an improvement over where things were (58-64 sales) between 2009 and 2012. From a value perspective, the sales prices

of these “less than an acre” lots have also been rather stable between 2008 and 2018 -- fluctuating no further than between \$53K and \$60K -- but then increased to \$73K in 2019. This rise to \$73K seems dramatic until you look further back to the meteoric rise and then fall to/from \$100K back in 2006.

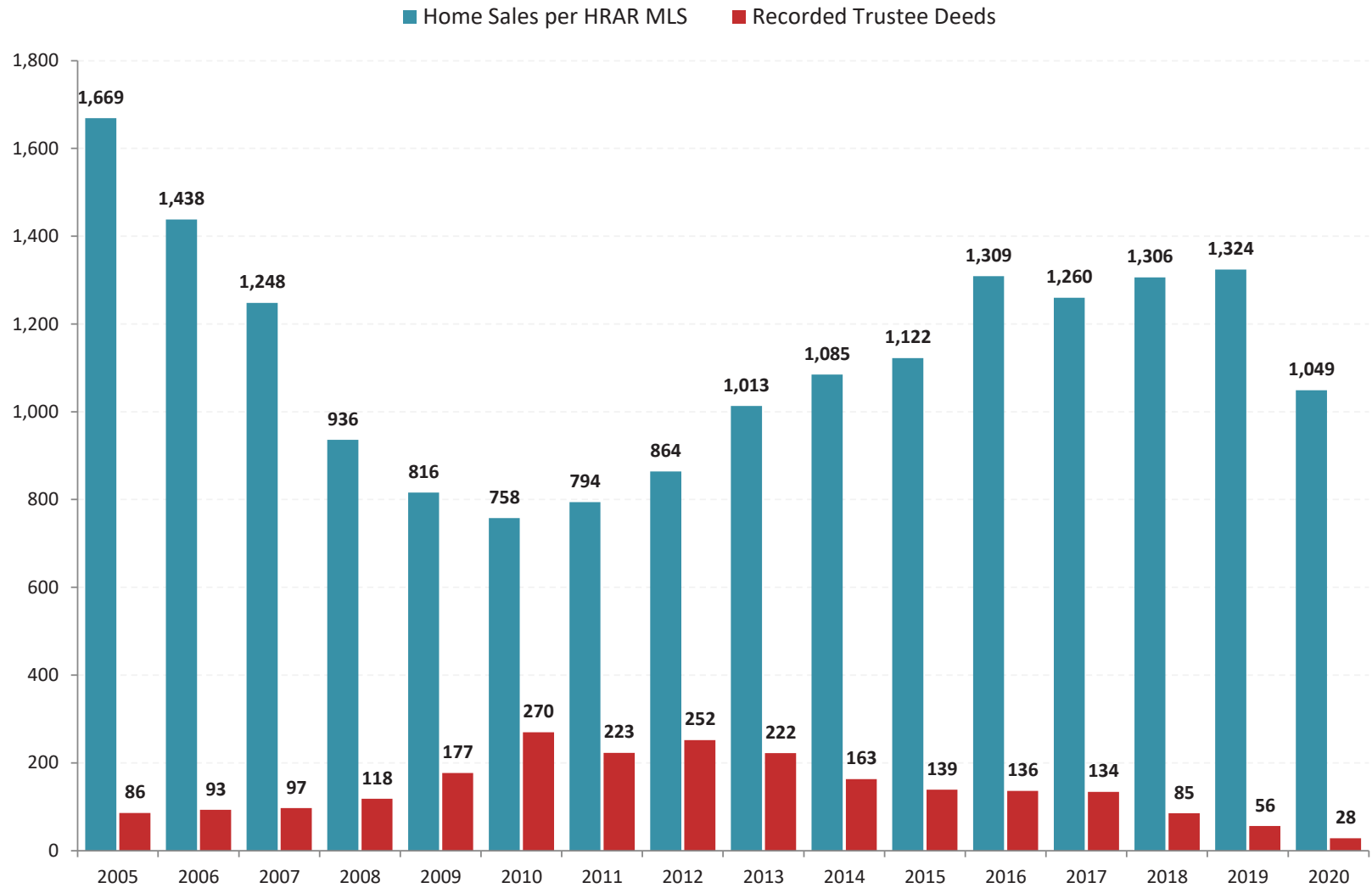
Harrisonburg & Rockingham County  
**Land Sales & Median Price Per Acre**  
 1 acre or more



The pace of sales of parcels of land larger than one acre in Harrisonburg or Rockingham County increased over the past nine years to 98 land sales -- marking the highest year of sales since 2005. The median price per acre declined in 2018 to \$14,818 and again (slightly) in 2019 to \$14,459. Of note -- some aspects of this

“median price per acre” calculation are affected by which parcels actually sell in a given year. The increase in buyer demand over the past nine years has not seemed to have created any upward lifting pressure on values to date.

Harrisonburg & Rockingham County  
Home Sales vs. Trustee Sales



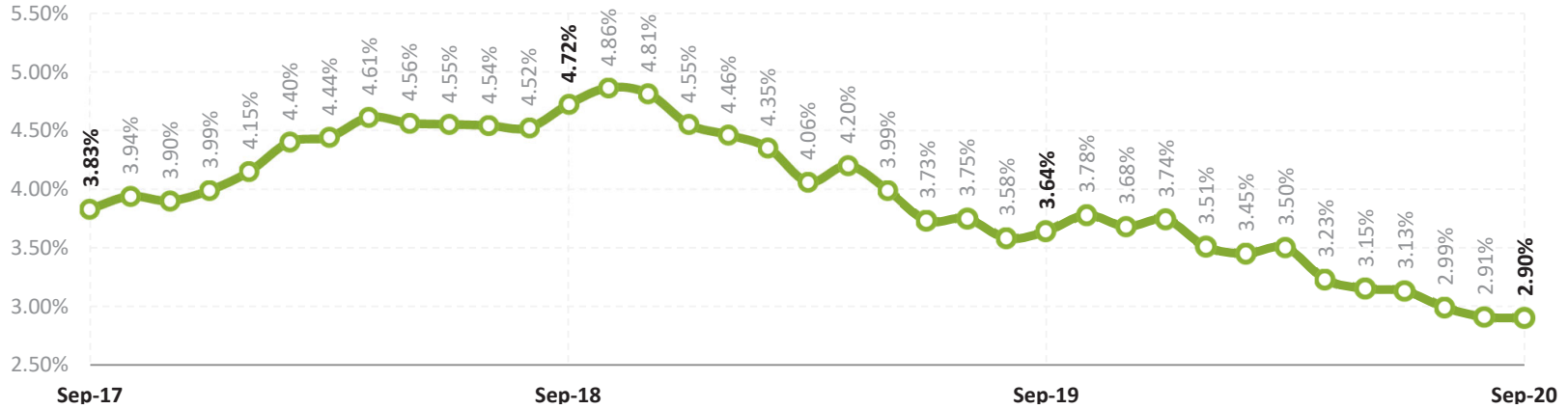
The graph above is a comparison of two imprecise measures -- but the comparison can still be helpful. The blue bars show the number of home sales recorded in the HRAR MLS -- this does not include private sales that did not involve a Realtor, nor new home sales directly from a builder. The red bars show the number of recorded

Trustee Deeds. Some foreclosed properties then show up again as REO properties. The foreclosure rate in our local market area has been trending downward over the past nine years and is now at the lowest level seen anytime in the past 15 years! The temporary moratorium on foreclosures will likely keep that figure low in 2020.

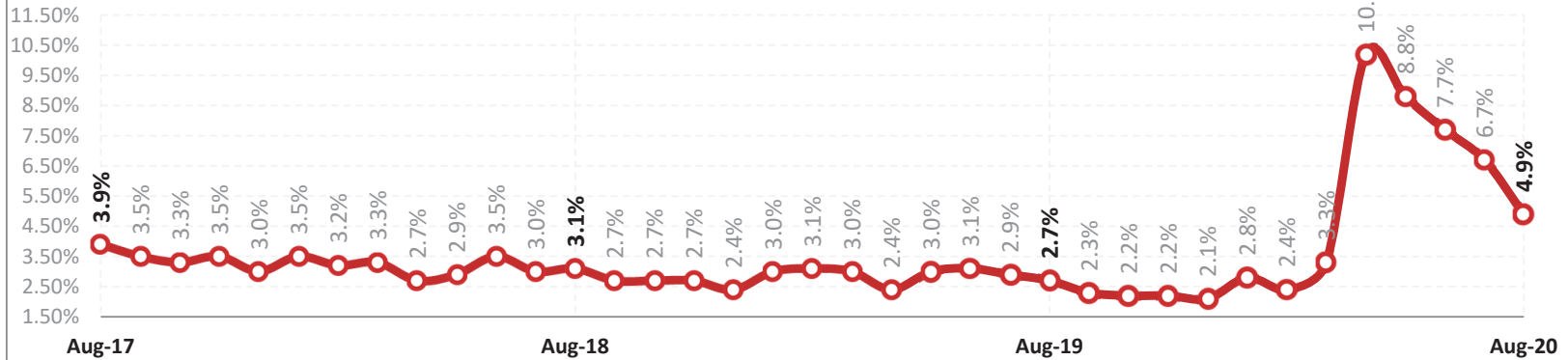


### Average 30-Year Fixed Mortgage Interest Rate

Source: Freddie Mac



### Harrisonburg-Rockingham MSA Unemployment Rate Not Seasonally Adjusted



As shown in the top graph above, for most of the past three years, home buyers have seen tremendously low interest rates -- almost always under 4.5%. Over the past 18 months those interest rates have then dipped even lower to the current historically low rate of 2.9%. Never have we seen rates this low. The second graph

above illustrates trends in the local unemployment rate -- which has trended downward over the past several years but which skyrocketed up to as high as 10.2% over the past few months due to COVID-19. A (usually) low local unemployment rate and low mortgage interest rates help our local housing market remain stable.

## Scott P. Rogers, Associate Broker



Scott P. Rogers, a professional, responsive, knowledgeable, friendly Associate Broker with Funkhouser Real Estate Group, began his real estate career in 2003 and has been working hard ever since to provide exceptional service to his buyer and seller clients in Harrisonburg and Rockingham County. Since 2010, Scott has been recognized each year by the Harrisonburg/Rockingham Association of Realtors as being in the top 1% of all area Realtors.

A native of Montgomery County, Maryland, Scott earned a B.A. (2000) and M.Ed. (2002) from James Madison University, providing him formal education in graphic design, management and counseling -- all of

which he leverages on a daily basis to the benefit of his clients. Scott's graphic design and web development background allows him to create and utilize high caliber technology and marketing solutions for his clients.

Scott incorporates many innovative tools and technologies to serve his clients including: professional photography equipment, a quadcopter (drone), property websites for each of his listings and 3D Walk Through technology. He leads the local market in the adoption of new marketing techniques - for example, check out WalkThroughThisHome.com.

In 2007, Scott began providing in-depth analysis and commentary on the local real estate market via his real estate blog, HarrisonburgHousingToday.com. Since that time, he created many other valuable online resources for the local community such as:

HarrisonburgHousingMarket.com, HarrisonburgInvestmentProperties.com, HarrisonburgAssessments.com, HarrisonburgPropertyTransfers.com, HarrisonburgTownhouses.com, BuyingAHomelnHarrisonburg.com, SellingAHomelnHarrisonburg.com and HarrisonburgRealEstateResources.com.

Scott and his wife, Shaena, live in Rockingham County with their two children, Luke and Emily. In his free time, Scott enjoys spending time with his family, traveling, coaching middle school volleyball and operating TakeThemAMEal.com and PerfectPotluck.com.

### Questions? Contact Scott anytime....

SCOTT P. ROGERS, Associate Broker  
540-578-0102 (mobile)  
scott@HarrisonburgHousingToday.com



## Local Online Real Estate Resources

**How To Navigate The Home Purchasing Process**  
[BuyingAHomelnHarrisonburg.com](http://BuyingAHomelnHarrisonburg.com)

**The Best Marketing Strategies For Selling Your Home**  
[SellingAHomelnHarrisonburg.com](http://SellingAHomelnHarrisonburg.com)

**Harrisonburg & Rockingham County Property Search**  
[ScottPRogers.com](http://ScottPRogers.com)

**Analysis and Commentary on our Local Real Estate Market**  
[HarrisonburgHousingMarket.com](http://HarrisonburgHousingMarket.com)

**Daily Housing Market Analysis & Commentary**  
[HarrisonburgHousingToday.com](http://HarrisonburgHousingToday.com)

**Fast Access to All New Listings of Homes For Sale**  
[NewListingsInHarrisonburg.com](http://NewListingsInHarrisonburg.com)

**Historical Record of Area Home Sales**  
[JustSoldInHarrisonburg.com](http://JustSoldInHarrisonburg.com)

**Property Transfers in Harrisonburg & Rockingham County**  
[HarrisonburgPropertyTransfers.com](http://HarrisonburgPropertyTransfers.com)

**Comprehensive Data on Single Family Home Neighborhoods**  
[HarrisonburgNeighborhoods.com](http://HarrisonburgNeighborhoods.com)

**Comprehensive Data on Area Townhouse Communities**  
[HarrisonburgTownhouses.com](http://HarrisonburgTownhouses.com)

**Analysis of Real Estate Investment Options in Harrisonburg**  
[HarrisonburgInvestmentProperties.com](http://HarrisonburgInvestmentProperties.com)

**The Most Realistic, Immersive Way to Experience a Home**  
[WalkThroughThisHome.com](http://WalkThroughThisHome.com)

**Analysis of Property Assessments**  
[HarrisonburgAssessments.com](http://HarrisonburgAssessments.com)

**Listings With Low List Prices Compared to Assessed Values**  
[BestDealsInHarrisonburg.com](http://BestDealsInHarrisonburg.com)

**Trustee Sales in Harrisonburg & Rockingham County**  
[HarrisonburgForeclosures.com](http://HarrisonburgForeclosures.com)